



# OFF-THE-ROAD PRODUCT GUIDE

VERSION 16.1



**Welcome,**

With the latest release, Version 16.1, of the Bridgestone OTR Product Guide, we have made updates to our product line up and specifications.

Bridgestone tires are subject to an ongoing development program. Specifications are current as of February 15, 2016 and are subject to change without notice. Although great care has been taken in producing this guide, we can accept no responsibility for any loss or damage resulting from undetected errors, omissions or misprints which may have occurred. For complete information regarding tire specifications, consult your local Bridgestone dealer or contact a Bridgestone OTR representative.

**Customer Service: 800-572-8905**

**OTRCUSTOMERSERVICE@BFUSA.COM**



**CONTAINER HANDLER & STRADDLE CARRIER TIRES**

3 - 10

RL, ELS2, VRLS, VCH, VCHD, VCHR, VCHS, VSDL2, STMS, VSMS

**DUMP TRUCK TIRES** ARTICULATED

11 - 16

VKT, VMT, VLT, VTS, VLTS, VSNT

**DUMP TRUCK TIRES** RIGID

17 - 28

VFT, VMT, VRF, RLS, VELs, VMTP, VMTS, VRDP, VREP, VREV, VRLS, VRPS, VRQP, VZTP, VZTS

**GRADER TIRES**

29 - 34

VKT, VSW, VSWAS, VUT, VJT

**LOADER / DOZER TIRES**

35 - 48

VL2, VLT, VTS, VLTS, VSNT, VSW, VUT, VKT, RL, VJT, VMT, RLS, VSNL, DL, VSDL, VSDR, VSDT, STMS, VSMS, VSMS2

**SCRAPER TIRES**

49 - 54

VKT, VLT, VMT, VRL, VUT

**SPECIALTY TIRES**

55 - 68

SPECIALTY

VGT, VHS, VKT, VSB, VSW, RL, VMTS, VRLS, VSJ, VUT, VSNL, VSNT, DL, VSDL, VSDL2, VSDR, VSDT, STMS, VSMS

APPLICATION	TREAD PATTERN , TRA CODE					
	TRACTION	ROCK	ROCK DEEP	ROCK EXTRA DEEP	ROCK EXTRA DEEP SMOOTH	INDUSTRIAL & OTHER
<b>CONTAINER HANDLER &amp; STRADDLE CARRIER</b>		RL E-3		VSDL2 L-5	STMS L-5S VSMS L-5S	ELS2 E-4 VRLS E-4 RL L-3 VCH L-3 VCHD L-4 VCHR L-4 VCHS L-4
<b>DUMP TRUCK ARTICULATED</b>	VKT E-2	VMT E-3 VLT E3/L3 VTS E3/L3	VLTS E4, E4/L4 VSNT E4/L4			
<b>DUMP TRUCK RIGID</b>		VFT E-3 VMT E-3 VRF E-3	RLS E-4 VELS E-4 VMTP E-4 VMTS E-4 VRDP E-4 VREP E-4 VREV E-4 VRLS E-4 VRPS E-4 VRQP E-4 VZTP E-4 VZTS E-4			
<b>GRADER</b>	VKT E2/G2, G-2 VSW G-2 VSWAS G-2 VUT G-2, L-2	VJT L-3				
<b>LOADER / DOZER</b>	VSW G-2, L-2 VUT G-2, L-2 VKT L-2	VL2 E3/L3 VLT E3/L3 VTS E3/L3, L-3 RL L-3 VJT L-3, L-4 VMT L-3	VLTS E-4, E4/L4 VSNT E4/L4, L-4 RLS L-4 VSNL L-4	DL L-5 VSDL L-5 VSDR L-5 VSDT L-5	STMS L-5S VSMS L-5S VSMS2 L-5S	
<b>SCRAPER</b>	VKT E-2 VUT L-2	VLT E-3 VMT E-3 VRL E-3				
<b>SPECIALTY</b>	VGT E-2 VHS E-2 VKT E-2 VSB E-2 VSW E-2, G-2, L-2 VUT G-2, L-2	RL E-3	VMTS E-4 VRLS E-4 VSNL L-4 VSNT L-4	DL L-5 VSDL L-5 VSDL2 L-5 VSDR L-5 VSDT L-5	STMS L-5S VSMS L-5S	VSJ E-7

## BRIDGESTONE AND FIRESTONE SPECIFICATION CODES

Each Bridgestone and Firestone off road tire has its own specification code on the sidewall that enables the customer to properly identify and match the right Bridgestone tire which will best meet the conditions under which the tire will be used.

SERVICE	CHARACTERISTICS	STRUCTURE
<b>E:</b> Earthmover	<b>1:</b> Standard	<b>A:</b> Standard
<b>D:</b> Loader & Dozer	<b>2:</b> Cut Resistant	<b>V:</b> Steel Breaker
<b>G:</b> Grader	<b>3:</b> Heat Resistant	
<b>S:</b> Skidder		

Example	E3A = Earthmover, Heat Resistant, and Standard
Note	DE2 = Combined D2A and E2A
Additional Compound Construction	CRC = Cut Resistant Compound
	UCR = Ultra Cut Resistant
	IDU = Industrial
Comments	LD = Loader Dozer

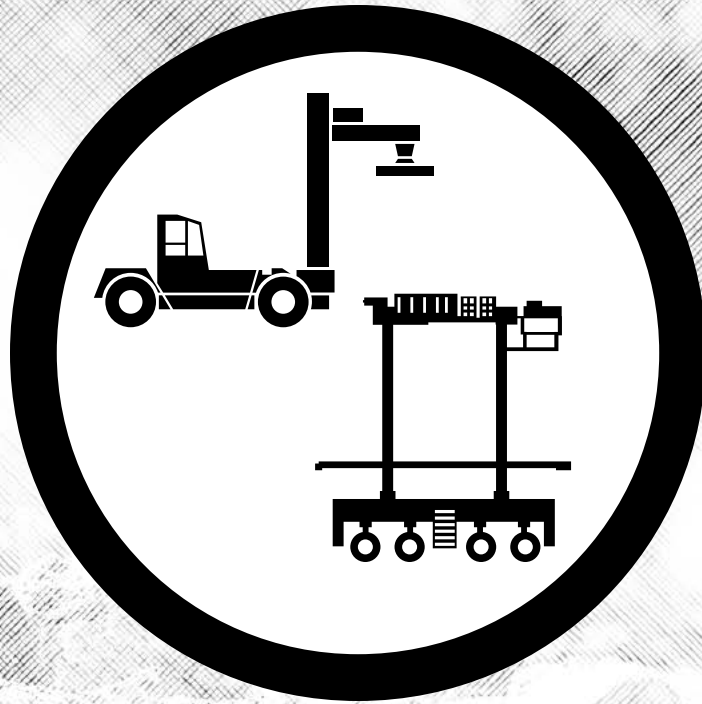
## METRIC SIZE CONVERSION CHART

PATTERN	METRIC SIZE	EQUIVALENT SIZE	OPTIONAL SIZE
VHS	385/95R24	14.00R24	
VHS	385/95R25	14.00R25	
VGT	445/80R25	17.5R25	
VHS	445/95R25	16.00R25	
VHS	525/80R25	20.5R25	
VTS	550/65R25	--	20.5R25
VSW	600/65R25	--	23.5R25
VTS	650/65R25	--	23.5R25
VLT, VTS, VLTS	750/65R25	30/65R25	
VTS	775/65R29	--	26.5R25
VTS, VLTS	875/65R29	--	29.5R25

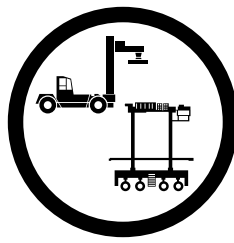
## CONVERSION CHART [STAR RATING TO PLY RATING]

SERVICE	TIRE SIZE	STAR RATING	CORRESPONDING PLY RATING
GRADER	14.00R24	★	up to 16
	16.00R24	★	up to 16
	17.5R25	★	up to 16
EARTHMOVER	12.00R24	★★★	up to 24
	14.00R24	★★★	up to 32
	14.00R25	★★★	up to 32
	16.00R25	★★	up to 36
	18.00R25	★	up to 24
		★★	up to 36
	18.00R33	★★	up to 40
	21.00R33	★★	up to 36
	21.00R35	★★	up to 44
	24.00R35	★★	up to 48
	24.00R49	★★	up to 48
	27.00R49	★★	up to 54
	30.00R51	★★	up to 58
	33.00R51	★★	up to 64
	36.00R51	★★	up to 66
	40.00R57	★★	up to 74
	17.5R25	★	up to 16
	20.5R25	★	up to 24
		★★	up to 28
	25/65R25	★★	up to 32
	23.5R25	★	up to 24
		★★	up to 32
	26.5R25	★★	up to 32
	29.5R25	★★	up to 34
	29.5R29	★★	up to 40
	33.25R29	★★	up to 44
	33.5R33	★★	up to 44
	37.5R33	★★	up to 48
	33.25R35	★★	up to 44
	37.25R35	★★	up to 48
37.5R39	★★	up to 52	
40.5/75R39	★★	up to 54	
LOADER	15.5R25	★	up to 16
	17.5R25	★	up to 16
	20.5R25	★	up to 24
		★★	up to 28
	23.5R25	★	up to 24
		★★	up to 32
	26.5R25	★	up to 24
		★★	up to 36
	29.5R25	★	up to 28
		★★	up to 34
	29.5R29	★	up to 34
	35/65R33	★	up to 36
	35/65R33	★★	up to 42
	45/65R45	★	up to 50
	45/65R45	★★	up to 58

**NOTE:** Due to the practice of altering inflation pressure to improve flotation on sand, Bridgestone does not apply a star rating to tire size 21.00R25 VSJ.



**CONTAINER HANDLER &  
STRADDLE CARRIER TIRES**



## PLY/STAR RATINGS

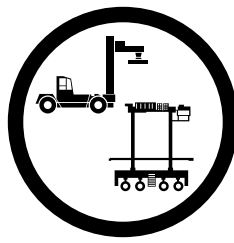
	E-3, L-3	E-4	E-4	L-3	L-4	L-4	L-4	L-5	L-5S	L-5S
	RL	ELS2	VRLS	VCH	VCHD	VCHR	VCHS	VSDL2	STMS	VSMS
12.00R20							3*	2*		2*
12.00R24										2*
14.00-24	28								20	
14.00R24				3*			3*			
16.00R25			2*		2*	2*				
18.00-25		40							32, 40	
18.00R25							3*			
18.00-33		36								
18.00R33							3*			
21.00-25	40									

### NOTICE:

Bridgestone tires are subject to an ongoing development program. Specifications are current as of February 15, 2016 and are subject to change without notice. Although great care has been taken in producing this guide, we can accept no responsibility for any loss or damage resulting from undetected errors, omissions or misprints which may have occurred. For complete information regarding tire specifications, consult your local Bridgestone dealer or contact a Bridgestone OTR representative.

Customer Service: **800-572-8905**

**OTRCUSTOMERSERVICE@BFUSA.COM**



R-LUG

BIAS

**RL**

**E-3, L-3**

- Non-Directional Pattern for Outstanding Rough Terrain Traction
- Special Compounds to Resist Heat and Cutting
- Exceptional Cut Resistance
- Designed for Operating on Rock, Coal and Earth Surfaces

CATEGORY	SIZE	PLY / STAR RATING	COMPOUND / CONSTRUCTION	TRA / APPLICATION	ARTICLE #	AVERAGE WEIGHT	OTD [32ND]	OVERALL DIAMETER	OVERALL WIDTH
SMALL TUBE TYPE	14.00-24	28	E2A	E-3	296295	307	35	53.8	15.2
SMALL TUBELESS	21.00-25	40	IDU	L-3	424789	1015	52	68.9	22.4



E-LUG S2

BIAS

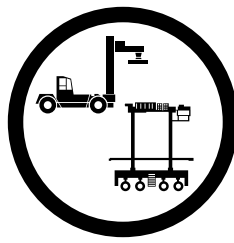
**ELS2**

**E-4**

- Designed for Container Handler Applications
- Strong Resistance to Puncture and Sidewall Damage
- Industrial Application Compound and Construction

CATEGORY	SIZE	PLY / STAR RATING	COMPOUND / CONSTRUCTION	TRA / APPLICATION	ARTICLE #	AVERAGE WEIGHT	OTD [32ND]	OVERALL DIAMETER	OVERALL WIDTH
SMALL TUBELESS	18.00-25	40	IDU	E-4	422894	853	84	66.3	20.3
LARGE TUBELESS	18.00-33	36	IDU	E-4	423645	973	84	73.9	20.3





V-STEEL R-LUG S

RADIAL

**VRLS**

**E-4**

- Deep Non-Directional Rock Service Tread Pattern
- Excellent Haulage Performance on Rock, Gravel, or Packed Earth
- Special Compounds Provide Excellent Wear and Cut Resistance for Long Tread Life
- Rock-deep Tread and Sidewall Protectors

CATEGORY	SIZE	PLY / STAR RATING	COMPOUND / CONSTRUCTION	TRA / APPLICATION	ARTICLE #	AVERAGE WEIGHT	OTD [32 <sup>ND</sup> ]	OVERALL DIAMETER	OVERALL WIDTH
SMALL TUBELESS	16.00R25	2*	IDU	E-4	423203	613	57	60.3	17.6



V-STEEL CONTAINER HANDLER

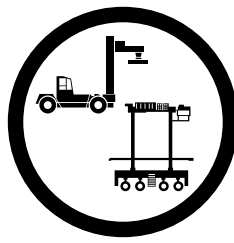
RADIAL

**VCH**

**L-3**

- Heavy Duty Radial Construction for Container Handler Applications
- Strong Resistance to Puncture and Sidewall Damage
- Industrial Application Compound and Construction
- Features Extra-Long Life, thanks to a Newly Developed Tread Compound and Smooth Wear due to Optimized Contact Pressure

CATEGORY	SIZE	PLY / STAR RATING	COMPOUND / CONSTRUCTION	TRA / APPLICATION	ARTICLE #	AVERAGE WEIGHT	OTD [32 <sup>ND</sup> ]	OVERALL DIAMETER	OVERALL WIDTH
SMALL TUBE TYPE	14.00R24	3*	IDU	L-3	293016	414	42	54.8	15.4



V-STEEL CONTAINER HANDLER DEEP

RADIAL

**VCHD**

**L-4**

- Strong Resistance to Puncture and Sidewall Damage
- Deep Tread Heavy Duty Radial Construction for Container Handler Applications
- Features Extra-Long Life, thanks to a Unique Tread Compound and Smooth Wear Due to Optimized Contact Pressure
- Industrial Application Compound and Construction

CATEGORY	SIZE	PLY / STAR RATING	COMPOUND / CONSTRUCTION	TRA / APPLICATION	ARTICLE #	AVERAGE WEIGHT	OTD [32ND]	OVERALL DIAMETER	OVERALL WIDTH
SMALL TUBELESS	16.00R25	2*	IDU	L-4	422053	633	68	59.1	17.1



V-STEEL CONTAINER HANDLER R

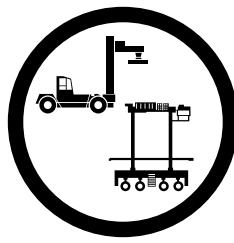
RADIAL

**VCHR**

**L-4**

- Heavy Duty Radial Construction for Container Handling Applications
- Designed for Optimum Irregular Wear Resistance
- Industrial Compound and Construction Application
- Exceptionally Long Tread Life, Superior Driving Comfort and Enhanced Overall Operating Efficiency

CATEGORY	SIZE	PLY / STAR RATING	COMPOUND / CONSTRUCTION	TRA / APPLICATION	ARTICLE #	AVERAGE WEIGHT	OTD [32ND]	OVERALL DIAMETER	OVERALL WIDTH
SMALL TUBELESS	16.00R25	2*	IDU	L-4	431810	625	63	59.2	17.1



V-STEEL CONTAINER HANDLER S

RADIAL

**VCHS**

**L-4**

- Deep Tread Heavy Duty 3\* Radial Construction for Container Handler Applications
- Optimum Design for Sidewall Stability
- Industrial Application Compound and Construction
- Newly developed All-Steel Radial Casings Improve Operational Stability and Safety
- Unique Pattern is Designed for Longer Tread Life by Preventing Irregular Wearing

CATEGORY	SIZE	PLY / STAR RATING	COMPOUND / CONSTRUCTION	TRA / APPLICATION	ARTICLE #	AVERAGE WEIGHT	OTD [32 <sup>ND</sup> ]	OVERALL DIAMETER	OVERALL WIDTH
SMALL TUBE TYPE	12.00R20	3*	IDU	L-4	227397	308	52	44.8	11.7
	14.00R24	3*	IDU	L-4	188205	520	79	55.6	15.1
SMALL TUBELESS	18.00R25	3*	IDU	L-4	423939	929	81	65.0	19.8
LARGE TUBELESS	18.00R33	3*	IDU	L-4	424064	1,104	86	73.1	19.4



V-STEEL D-LUG

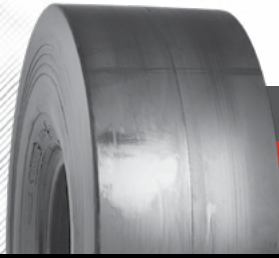
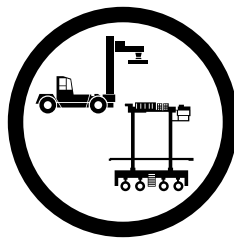
RADIAL

**VSDL2**

**L-5**

- Extra-Deep Tread and Shoulder Protection offer Cut and Impact Resistance, Stability, and Ride Comfort
- Excellent Traction in Severe or Rocky Conditions
- Designed for Extra-Heavy Duty Loader Performance

CATEGORY	SIZE	PLY / STAR RATING	COMPOUND / CONSTRUCTION	TRA / APPLICATION	ARTICLE #	AVERAGE WEIGHT	OTD [32 <sup>ND</sup> ]	OVERALL DIAMETER	OVERALL WIDTH
SMALL TUBELESS	12.00R20	2*	D2A	L-5	157392	325	72	46.0	12.6



SMOOTH TREAD MS

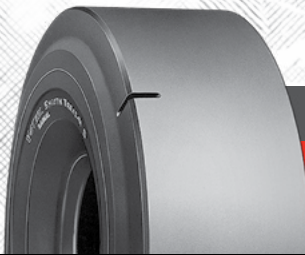
BIAS

**STMS**

**L-5S**

- Extra Deep Tread for Maximum Life and Exceptional Cut Resistance
- Designed for Container Handler Applications
- STMS's Smooth, Extra-Deep, and Specially Compounded Rubber ensures Maximum Resistance to Cutting, Wearing, and Heat

CATEGORY	SIZE	PLY / STAR RATING	COMPOUND / CONSTRUCTION	TRA / APPLICATION	ARTICLE #	AVERAGE WEIGHT	OTD [32 <sup>ND</sup> ]	OVERALL DIAMETER	OVERALL WIDTH
SMALL TUBE TYPE	14.00-24	20	D2A	L-5S	263303	534	98	54.1	14.4
SMALL TUBELESS	18.00-25	32	D2A	L-5S	420972	1,092	106	65.9	20.5
	18.00-25	40	IDU	L-5S	422231	1,083	106	65.9	20.5



V-STEEL SMOOTH TREAD

BIAS

**VSMS**

**L-5S**

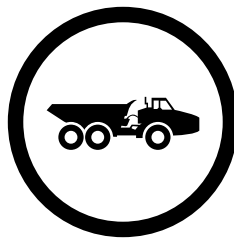
- Extra-Deep Heavy Duty Radial Construction for Container Handler Applications
- Strong Resistance to Puncture and Sidewall Damage
- Industrial Compound and Construction
- Smooth Extra-Deep Tread with a Reinforced All-Steel Radial Casing

CATEGORY	SIZE	PLY / STAR RATING	COMPOUND / CONSTRUCTION	TRA / APPLICATION	ARTICLE #	AVERAGE WEIGHT	OTD [32 <sup>ND</sup> ]	OVERALL DIAMETER	OVERALL WIDTH
SMALL TUBE TYPE	12.00R20	2*	D2A	L-5S	150916	351	72	46.2	12.3
	12.00R24	2*	D2A	L-5S	150924	410	72	50.2	12.3





**DUMP TRUCK TIRES**  
ARTICULATED



## PLY/STAR RATINGS

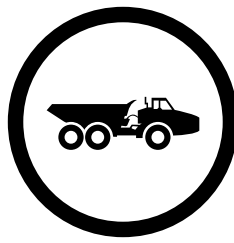
	E-2	E-3	E3/L3	E3/L3	E-4, E4/L4	E4/L4
	VKT	VMT	VLT	VTS	VLTS	VSNT
20.5R25		2*			MS	
23.5R25	2*	2*	MS		MS	
26.5R25	2*	2*	MS		2*	MS
29.5R25		2*	MS		2*	MS
29.5R29						
750/65R25			MS		2*	
875/65R29				MS	MS	

### NOTICE:

Bridgestone tires are subject to an ongoing development program. Specifications are current as of February 15, 2016 and are subject to change without notice. Although great care has been taken in producing this guide, we can accept no responsibility for any loss or damage resulting from undetected errors, omissions or misprints which may have occurred. For complete information regarding tire specifications, consult your local Bridgestone dealer or contact a Bridgestone OTR representative.

Customer Service: **800-572-8905**

**OTRCUSTOMERSERVICE@BFUSA.COM**



V-STEEL G-TRACTION

RADIAL

**VKT**

**E-2**

- Directional Tread Pattern
- Cut Resistant Tread Design for Even Wear
- Ideal for Soft, Muddy Surfaces offering Excellent Traction and Floatation

CATEGORY	SIZE	PLY / STAR RATING	COMPOUND / CONSTRUCTION	TRA / APPLICATION	ARTICLE #	AVERAGE WEIGHT	OTD [32 <sup>ND</sup> ]	OVERALL DIAMETER	OVERALL WIDTH
SMALL TUBELESS	23.5R25	2*	E1A	E-2	261351	655	42	63.1	24.1
	26.5R25	2*	E1A	E-2	275638	864	49	68.2	26.7



V-STEEL M-TRACTION

RADIAL

**VMT**

**E-3**

- Non-Directional Tread Pattern for Even Wear
- Normal-Depth Tread features Strong Resistance to Heat Buildup
- Excellent Traction in a Variety of Conditions

CATEGORY	SIZE	PLY / STAR RATING	COMPOUND / CONSTRUCTION	TRA / APPLICATION	ARTICLE #	AVERAGE WEIGHT	OTD [32 <sup>ND</sup> ]	OVERALL DIAMETER	OVERALL WIDTH
SMALL TUBELESS	20.5R25	2*	E1A	E-3	418161	514	42	58.3	20.9
	23.5R25	2*	E1A	E-3	418196	708	44	63.0	24.3
	26.5R25	2*	E1A	E-3	419311	904	48	68.3	26.9
LARGE TUBELESS	29.5R25	2*	E1A	E-3	419338	1,269	53	73.4	30.0
	29.5R25	2*	E2A	E-3	420662	1,237	53	73.4	30.0





### V-STEEL L-TRACTION

RADIAL

# VLT

# E3/L3

- Radial Traction Pattern provides Increased Productivity and Longer Life
- Self-Cleaning, Non-Directional Tread Pattern provides Even Wear
- Large Contact Footprint provides Excellent Traction and Flotation and Improved Rider Comfort
- Suitable for Wet, Soft or Muddy Surfaces

CATEGORY	SIZE	PLY / STAR RATING	COMPOUND / CONSTRUCTION	TRA / APPLICATION	ARTICLE #	AVERAGE WEIGHT	OTD [32ND]	OVERALL DIAMETER	OVERALL WIDTH
SMALL TUBELESS	23.5R25	MS	DE2	E3/L3	421960	799	54	63.9	24.3
	26.5R25	MS	DE2	E3/L3	421979	1,040	57	68.8	26.9
LARGE TUBELESS	29.5R25	MS	DE2	E3/L3	421987	1,303	60	73.9	30.0
	750/65R25	MS	DE2	E3/L3	420220	1,024	54	64.0	30.1



### V-STEEL TRACTION AND STABILITY

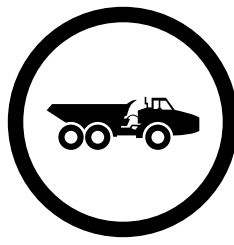
RADIAL

# VTS

# E3/L3

- Pattern designed for Operator Comfort
- Design features Stone Ejectors
- Self-Cleaning Tread Design for Optimum Traction
- Exceptional Stability with Superior Riding Comfort

CATEGORY	SIZE	PLY / STAR RATING	COMPOUND / CONSTRUCTION	TRA / APPLICATION	ARTICLE #	AVERAGE WEIGHT	OTD [32ND]	OVERALL DIAMETER	OVERALL WIDTH
LARGE TUBELESS	875/65R29	MS	DE2	E3/L3	431283	1,559	60	73.4	33.5



V-STEEL L-TRACTION S

RADIAL

**VLTS**

**E-4, E4/L4**

- Excellent Traction on Rocky, Gravel, and Packed Earth Surfaces in Mines, Quarries and Construction Sites
- Deep Tread for Extra-Long Tread Life
- Self-Cleaning Tread Design

CATEGORY	SIZE	PLY / STAR RATING	COMPOUND / CONSTRUCTION	TRA / APPLICATION	ARTICLE #	AVERAGE WEIGHT	OTD [32ND]	OVERALL DIAMETER	OVERALL WIDTH
SMALL TUBELESS	20.5R25	MS	DE2	E-4	424102	636	62	58.2	20.9
	23.5R25	MS	DE2	E-4	422738	875	68	63.6	24.1
	26.5R25	2*	E2A	E-4	422711	1,130	76	68.3	26.7
LARGE TUBELESS	29.5R25	2*	E2A	E-4	422916	1,470	82	73.4	30.0
	750/65R25	2*	E2A	E-4	427560	1,078	69	63.9	30.1
	875/65R29	MS	DE2	E4/L4	000470	1,551	76	74.0	33.8



V-STEEL N-TRACTION

RADIAL

**VSNT**

**E4/L4**

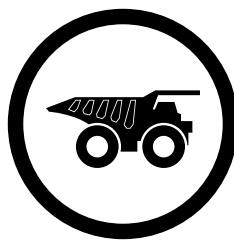
- Deep Tread resists Cuts and Impacts
- Designed for Excellent Traction in Moderate to Severe Conditions without Compromising Tread Life
- Radial Multiple Star Construction for Heavy Duty Performance

CATEGORY	SIZE	PLY / STAR RATING	COMPOUND / CONSTRUCTION	TRA / APPLICATION	ARTICLE #	AVERAGE WEIGHT	OTD [32ND]	OVERALL DIAMETER	OVERALL WIDTH
SMALL TUBELESS	26.5R25	MS	DE2	E4/L4	423971	1,234	72	70.0	27.0
LARGE TUBELESS	29.5R25	MS	DE2	E4/L4	424196	1,589	76	75.0	30.2





**DUMP TRUCK TIRES**  
RIGID



## PLY/STAR RATINGS

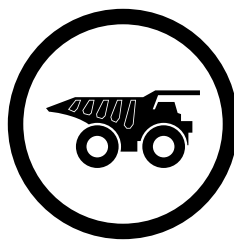
	E-3	E-3	E-3	E-4	E-4	E-4	E-4	E-4	E-4	E-4	E-4	E-4	E-4	E-4	E-4
	VFT	VMT	VRF	RLS	VELS	VMTP	VMTS	VRDP	VREP	VREV	VRLS	VRPS	VRQP	VZTP	VZTS
18.00R25					2*		2*								
18.00R33					2*	2*							2*		
21.00R33						2*									
21.00R35					2*	2*									
24.00R35						2*					2*		2*		
24.00-35															
27.00R49	2*					2*			2*						
27.00-49				48											
30.00R51		2*									2*				
33.00R51		2*				2*						2*			
36.00R51											2*				
37.00R57					2*										2*
40.00R57		2*						2*							2*
42/90R57								2*							
46/90R57								2*	2*		2*		2*		
50/90R57												2*			
53/80R63			2*									2*			
59/80R63			2*					2*		2*		2*			

### NOTICE:

Bridgestone tires are subject to an ongoing development program. Specifications are current as of February 15, 2016 and are subject to change without notice. Although great care has been taken in producing this guide, we can accept no responsibility for any loss or damage resulting from undetected errors, omissions or misprints which may have occurred. For complete information regarding tire specifications, consult your local Bridgestone dealer or contact a Bridgestone OTR representative.

Customer Service: **800-572-8905**

**OTRCUSTOMERSERVICE@BFUSA.COM**



V-STEEL F-TRACTION

RADIAL

**VFT**

**E-3**

- Non-Directional Tread Pattern
- Excellent Flotation and Traction in Soft Soil or Mud
- Provides Good Traction, generates Low Heat and assures Long Tread Life

CATEGORY	SIZE	PLY / STAR RATING	COMPOUND / CONSTRUCTION	TRA / APPLICATION	ARTICLE #	AVERAGE WEIGHT	OTD [32 <sup>ND</sup> ]	OVERALL DIAMETER	OVERALL WIDTH
GIANT TUBELESS	27.00R49	2*	E3A	E-3	420077	2,519	56	104.2	29.5



V-STEEL M-TRACTION

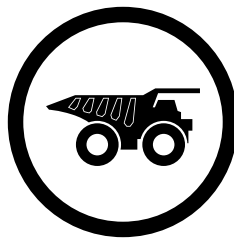
RADIAL

**VMT**

**E-3**

- Non-Directional Tread Pattern for Even Wear
- Cool Running, Heat Resistant Compounds Available
- Excellent Traction in a Variety of Conditions - Wet, Soft or Muddy Surfaces
- Excellent Maneuverability and Flotation

CATEGORY	SIZE	PLY / STAR RATING	COMPOUND / CONSTRUCTION	TRA / APPLICATION	ARTICLE #	AVERAGE WEIGHT	OTD [32 <sup>ND</sup> ]	OVERALL DIAMETER	OVERALL WIDTH
GIANT TUBELESS	30.00R51	2*	E3A	E-3	422207	3,551	57	112.2	33.6
	33.00R51	2*	E1A	E-3	422436	4,223	61	117.6	36.7
	33.00R51	2*	E3A	E-3	420689	4,222	61	117.6	36.7
	40.00R57	2*	E1A	E-3	427016	6,966	81	138.3	43.6
	40.00R57	2*	E2A	E-3	427050	6,966	81	138.3	43.6
	40.00R57	2*	E3A	E-3	427033	7,185	81	138.3	43.6



V-STEEL ROCK FAST PREMIUM

RADIAL

**VRF**

**E-3**

- Optimized Tread Pattern for Even Wear
- Cooler Running in High Speed - Long Haul Applications
- Ultra-Double Casing
- Exceptional Stability, Superior Riding Comfort, and Optimum Traction

CATEGORY	SIZE	PLY / STAR RATING	COMPOUND / CONSTRUCTION	TRA / APPLICATION	ARTICLE #	AVERAGE WEIGHT	OTD [32 <sup>ND</sup> ]	OVERALL DIAMETER	OVERALL WIDTH
GIANT TUBELESS	53/80R63	2*	E3A	E-3	430314	10,000	80	147.3	51.6
	59/80R63	2*	E1A	E-3	430178	11,840	89	158.3	57.4
	59/80R63	2*	E2A	E-3	000606	11,840	89	158.3	57.4
	59/80R63	2*	E3A	E-3	429889	11,840	89	158.3	57.4



R-LUG S

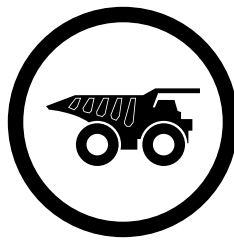
BIAS

**RLS**

**E-4**

- Deep Non-Directional Tread Pattern
- Special Compounds to Resist Cutting
- Excellent Self-Cleaning Tread Design
- Optimum Traction without Compromising Tread Life

CATEGORY	SIZE	PLY / STAR RATING	COMPOUND / CONSTRUCTION	TRA / APPLICATION	ARTICLE #	AVERAGE WEIGHT	OTD [32 <sup>ND</sup> ]	OVERALL DIAMETER	OVERALL WIDTH
LARGE TUBELESS	27.00-49	48	E2A	E-4	276146	2,789	88	105.0	29.8



V-STEEL E-LUG S

RADIAL

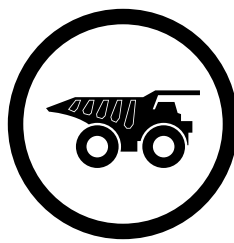
**VELS**

**E-4**

- Deep Non-Directional Rock Tread and Sidewall Protection
- Special Compounds Provide Exceptional Wear and Cut Resistance
- Certain Sizes feature Low Profile, Low Pressure Technologies
- Suited for Abrasive Roads, such as Rocky, Gravel or Packed Surfaces

CATEGORY	SIZE	PLY / STAR RATING	COMPOUND / CONSTRUCTION	TRA / APPLICATION	ARTICLE #	AVERAGE WEIGHT	OTD [32ND]	OVERALL DIAMETER	OVERALL WIDTH
SMALL TUBELESS	18.00R25	2*	E2A	E-4	419281	791	63	64.6	20.3
LARGE TUBELESS	18.00R33	2*	E2A	E-4	276316	959	61	73.1	20.2
	21.00R35	2*	E2A	E-4	276324	1,469	74	80.5	22.7
GIANT TUBELESS	37.00R57	2*	E3A	E-4	424587	6,095	97	135.0	





V-STEEL M-TRACTION PREMIUM

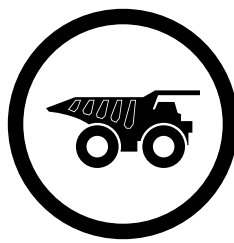
RADIAL

**VMTP**

**E-4**

- Premium Deep Tread Delivers Exceptional Tread Wear
- Excellent Lateral and Side Traction Performance
- Special Compounds for Exceptional Wear and Cut Resistance
- Ideal for Muddy Surfaces

CATEGORY	SIZE	PLY / STAR RATING	COMPOUND / CONSTRUCTION	TRA / APPLICATION	ARTICLE #	AVERAGE WEIGHT	OTD [32 <sup>ND</sup> ]	OVERALL DIAMETER	OVERALL WIDTH
LARGE TUBELESS	18.00R33	2*	E1A	E-4	422746	967	69	73.6	20.3
	18.00R33	2*	E2A	E-4	423866	979	69	73.6	20.3
	18.00R33	2*	E2A	E-4	422754	979	69	73.6	20.3
	21.00R33	2*	E2A	E-4	428818	1,378	77	78.7	22.8
	21.00R35	2*	E1A	E-4	422770	1,400	77	80.6	22.7
	21.00R35	2*	E2A	E-4	422789	1,444	77	80.6	22.7
	24.00R35	2*	E1A	E-4	3542	1,831			
	24.00R35	2*	E2A	E-4	422991	1,831	86	86.0	26.0
	24.00R35	2*	E2A	E-4	423009	1,828	86	86.0	26.0
	24.00R35	2*	E3A	E-4	3035	1,786	86		
	27.00R49	2*	E1A	E-4	422479	2,978	92	106.3	29.5
	27.00R49	2*	E2	E-4	422460	3,018	92	106.3	29.5
	27.00R49	2*	E2A	E-4	423106	3,001	92	106.3	29.5
	27.00R49	2*	E3A	E-4	422461	3,017	92	106.3	29.5
GIANT TUBELESS	33.00R51	2*	E1A	E-4	423084	4,940	113	120.6	36.7
	33.00R51	2*	E2A	E-4	423076	4,974	113	120.6	36.7
	33.00R51	2*	E2A	E-4	423041	4,946	113	120.6	36.7
	33.00R51	2*	E3A	E-4	3878	4,850	113		



V-STEEL M-TRACTION S

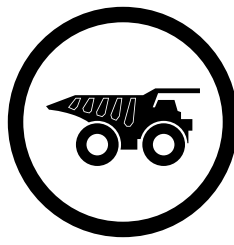
RADIAL

**VMTS**

**E-4**

- Non-Directional Deep Tread Pattern for Strong Traction, especially Resistant to Side-slipping
- Wear Resistance for Longer Tread Life
- Ideal for Muddy or Soft Surfaces

CATEGORY	SIZE	PLY / STAR RATING	COMPOUND / CONSTRUCTION	TRA / APPLICATION	ARTICLE #	AVERAGE WEIGHT	OTD [32 <sup>ND</sup> ]	OVERALL DIAMETER	OVERALL WIDTH
SMALL TUBELESS	18.00R25	2*	E2A	E-4	418323	752	64	65.1	19.9



V-STEEL ROCK DEEP PREMIUM

RADIAL

**VRDP**

**E-4**

- Extra-Deep Tread Design Extends Tire Tread Life
- Increased Air Chamber Capacity Results in Longer Life and Lower Operating Temperatures
- Extra-Deep Rock Tread with Sidewall Protectors and Super Cut Resistance

CATEGORY	SIZE	PLY / STAR RATING	COMPOUND / CONSTRUCTION	TRA / APPLICATION	ARTICLE #	AVERAGE WEIGHT	OTD [32 <sup>ND</sup> ]	OVERALL DIAMETER	OVERALL WIDTH
GIANT TUBELESS	40.00R57	2*	E1A	E-4	425741	8,488	122	140.7	43.6
	42/90R57	2*	E1A	E-4	425282	7,181	122	136.1	41.7
	42/90R57	2*	E2A	E-4	425299	7,220	122	136.1	41.7
	42/90R57	2*	E2A	E-4	425316	7,181	122	136.1	41.7
	42/90R57	2*	E3A	E-4	425333	7,181	122	136.1	41.7
	46/90R57	2*	E1A	E-4	428478	8,800	122	140.7	45.1
	46/90R57	2*	E2A	E-4	428495	8,800	122	140.7	45.1
	46/90R57	2*	E3A	E-4	428512	8,800	122	140.7	45.1
	59/80R63	2*	E1A	E-4	428631	11,968	146	158	57.8



V-STEEL ROCK E-PREMIUM RADIAL

RADIAL

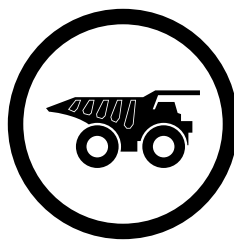
**VREP**

**E-4**

- Low Heat Generation
- Exceptional Tread Life
- Unique 2-Stage Lug Design for Stability
- Suitable for Giant Rigid Dump Trucks Running at High Speeds which can cause Extreme Heat Buildup inside the Tire

CATEGORY	SIZE	PLY / STAR RATING	COMPOUND / CONSTRUCTION	TRA / APPLICATION	ARTICLE #	AVERAGE WEIGHT	OTD [32 <sup>ND</sup> ]	OVERALL DIAMETER	OVERALL WIDTH
LARGE TUBELESS	27.00R49	2*	E1A	E-4	431385	3,088	84	105.9	29.5
	27.00R49	2*	E2A	E-4	431402	3,060	84	105.9	29.5
	27.00R49	2*	E2A LS	E-4	431419	3,050	84	105.9	29.5
	27.00R49	2*	E3A	E-4	431368	3,039	84	105.9	29.5

LS = Special Cut Resistance



V-STEEL ROCK EXTRA V-OPERATION

RADIAL

**VREV**

**E-4**

- Ideal for Heavy Duty Mining Applications
- Wear Resistance for Longer Tread Life
- Inventive Pattern Improves Wear Resistance by 7% and Heat Resistance by 10% compared to Bridgestone VRPS

CATEGORY	SIZE	PLY / STAR RATING	COMPOUND / CONSTRUCTION	TRA / APPLICATION	ARTICLE #	AVERAGE WEIGHT	OTD [32ND]	OVERALL DIAMETER	OVERALL WIDTH
GIANT TUBELESS	46/90R57	2*	E1A	E-4	4535	8,800	122	140.6	45.1
	46/90R57	2*	E2A	E-4	4536	8,800	122	140.6	45.1
	46/90R57	2*	E3A	E-4	4486	8,697	122	140.6	45.1
	46/90R57	2*	E2A LS	E-4	5308	8,000	122	140.6	45.1

LS = Special Cut Resistance



V-STEEL R-LUG S

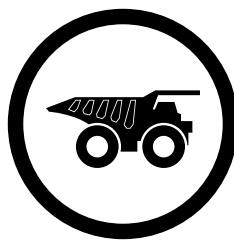
RADIAL

**VRLS**

**E-4**

- Deep Non-Directional Rock Service Tread Pattern
- Excellent Haulage Performance on Rock, Gravel, or Packed Earth
- Special Compounds Provide Excellent Wear and Cut Resistance for Long Tread Life
- Rock-Deep Tread and Sidewall Protectors

CATEGORY	SIZE	PLY / STAR RATING	COMPOUND / CONSTRUCTION	TRA / APPLICATION	ARTICLE #	AVERAGE WEIGHT	OTD [32ND]	OVERALL DIAMETER	OVERALL WIDTH
LARGE TUBELESS	24.00R35	2*	E1A	E-4	275883	1,712	74	85.6	26.0
	24.00R35	2*	E2A	E-4	419141	1,732	74	85.6	26.0
	24.00R35	2*	E2A	E-4	422169	1,730	74	85.6	26.0
	30.00R51	2*	E3A	E-4	420603	3,851	94	114.6	33.6
GIANT TUBELESS	36.00R51	2*	E1A	E-4	421898	5,501	109	126.1	40.0
	36.00R51	2*	E2A	E-4	276367	5,533	109	126.1	40.0
	36.00R51	2*	E2A	E-4	419559	5,501	109	126.1	40.0
	36.00R51	2*	E3A	E-4	276405	5,499	109	126.1	40.0



V-STEEL ROCK PREMIUM SERVICE

RADIAL

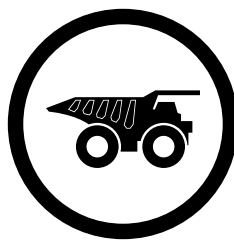
**VRPS**

**E-4**

- Ultra-Durable Casing for Extra-long Tread Life
- Low Heat Generation
- Recommended for use in Copper, Iron, Gold and other Metal Mines that require Extra Protection Against Tire Wear, Cuts and Punctures

CATEGORY	SIZE	PLY / STAR RATING	COMPOUND / CONSTRUCTION	TRA / APPLICATION	ARTICLE #	AVERAGE WEIGHT	OTD [32 <sup>ND</sup> ]	OVERALL DIAMETER	OVERALL WIDTH
GIANT TUBELESS	33.00R51	2*	E1A	E-4	3798	5,181	110		
	33.00R51	2*	E2A	E-4	3795	5,181	110		
	33.00R51	2*	E2A LS	E-4	3796	5,181	110		
	33.00R51	2*	E3A	E-4	3797	5,181	110		
	46/90R57	2*	E1A	E-4	429430	8,450	122	140.7	45.4
	46/90R57	2*	E2A	E-4	429447	8,450	122	140.7	45.4
	46/90R57	2*	E2A LS	E-4	429481	8,450	122	140.7	45.4
	46/90R57	2*	E3A	E-4	429464	8,450	122	140.7	45.4
	50/90R57	2*	E1A	E-4	429634	10,829	135	151.2	50.5
	50/90R57	2*	E2A	E-4	429651	10,829	135	151.2	50.5
	50/90R57	2*	E2A	E-4	429668	10,829	135	151.2	50.5
	50/90R57	2*	E3A	E-4	429685	10,829	135	151.2	50.5
	53/80R63	2*	E1A	E-4	429379	10,600	139	150.7	51.3
	53/80R63	2*	E2A	E-4	429396	10,600	139	150.7	51.3
	53/80R63	2*	E3A	E-4	429413	10,699	139	150.7	51.3
	59/80R63	2*	E1A	E-4	430892	12,605	146	158.1	57.8
	59/80R63	2*	E2A	E-4	430909	12,400	146	158.1	57.8
	59/80R63	2*	E2A LS	E-4	430977	11,500	146	158.1	57.8
59/80R63	2*	E3A	E-4	430926	12,655	146	158.1	57.8	

LS = Special Cut Resistance HL = Special Cut Resistance



V-STEEL ROCK QUARRY PREMIUM

RADIAL

**VRQP**

**E-4**

- Specially developed for Mid-Sized Rigid Dump Trucks working in Quarries and other Tough Operations
- Extra-Deep Tread for Longer Tire Life
- Innovative Tread Design for Improved Traction
- Reinforced Shoulder Design for Reduced Sidewall Damage

CATEGORY	SIZE	PLY / STAR RATING	COMPOUND / CONSTRUCTION	TRA / APPLICATION	ARTICLE #	AVERAGE WEIGHT	OTD [32ND]	OVERALL DIAMETER	OVERALL WIDTH
LARGE TUBELESS	18.00R33	2*	E2A	E-4	431504	1,080	81	74.4	20.3
	24.00R35	2*	E2A	E-4	431521	1,930	90	86.4	26.0
	24.00R35	2*	E2A LS	E-4	427900	1,933	90	86.4	26.0

LS = Special Cut Resistance



V-STEEL Z-TRACTION PREMIUM

RADIAL

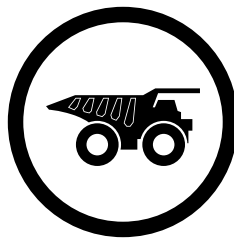
**VZTP**

**E-4**

- Optimized Tread Pattern for Exceptional Traction
- Extra Sidewall Protectors to Reduce Rock Cuts
- Extra-Deep Tread Blocks Maximize Wear Life and Cut Protection

CATEGORY	SIZE	PLY / STAR RATING	COMPOUND / CONSTRUCTION	TRA / APPLICATION	ARTICLE #	AVERAGE WEIGHT	OTD [32ND]	OVERALL DIAMETER	OVERALL WIDTH
GIANT TUBELESS	46/90R57	2*	E1A	E-4	3917	8,718	122	141.1	45.1
	46/90R57	2*	E2A LS	E-4	427951	8,718	122	141.1	45.1

LS = Special Cut Resistance



V-STEEL Z-TRACTION S

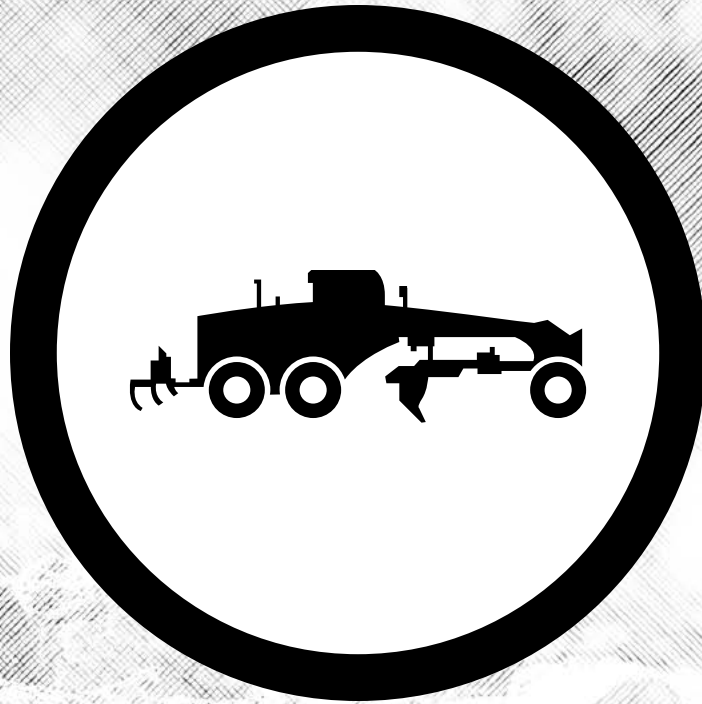
RADIAL

**VZTS**

**E-4**

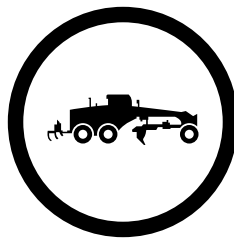
- Exceptional Side-Slip Resistance
- Non-Directional Block Design with Side Protectors ideal for Muddy or Soft Conditions
- Special Compounds provide Exceptional Wear and Cut Resistance
- Suitable for Rocky Surfaces

CATEGORY	SIZE	PLY / STAR RATING	COMPOUND / CONSTRUCTION	TRA / APPLICATION	ARTICLE #	AVERAGE WEIGHT	OTD [32ND]	OVERALL DIAMETER	OVERALL WIDTH
GIANT TUBELESS	37.00R57	2*	E1A	E-4	422681	6,646	110	134.7	41.1
	37.00R57	2*	E2A	E-4	422975	6,681	110	134.7	41.1
	37.00R57	2*	E2A	E-4	422800	6,647	110	134.7	41.1
	37.00R57	2*	E3A	E-4	422819	6,644	110	134.7	41.1
	40.00R57	2*	E1A	E-4	422037	8,059	115	141.1	44.9
	40.00R57	2*	E2A	E-4	422584	8,099	115	141.1	44.9
	40.00R57	2*	E3A	E-4	421324	8,058	115	141.1	44.9



## **GRADER TIRES**





## PLY/STAR RATINGS

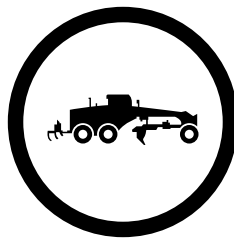
	E2/G2, G-2	G-2	G-2	G-2, L-2	L-3
	VKT	VSW	VSWAS	VUT	VJT
13.00R24				1*	
14.00R24	1*	1*		1*	
15.5R25				2*	
16.00R24	1*	1*			
17.5R25	1*	1*	1*	1*	
20.5R25				1*	1*
23.5R25				1*	

### NOTICE:

Bridgestone tires are subject to an ongoing development program. Specifications are current as of February 15, 2016 and are subject to change without notice. Although great care has been taken in producing this guide, we can accept no responsibility for any loss or damage resulting from undetected errors, omissions or misprints which may have occurred. For complete information regarding tire specifications, consult your local Bridgestone dealer or contact a Bridgestone OTR representative.

Customer Service: **800-572-8905**

**OTRCUSTOMERSERVICE@BFUSA.COM**



V-STEEL K-TRACTION

RADIAL

**VKT**

**E2/G2, G-2**

- Directional Tread Pattern
- Cut Resistant Tread Design for Even Wear
- Excellent Traction and Flotation
- Ideal for Soft or Muddy Surfaces

CATEGORY	SIZE	PLY / STAR RATING	COMPOUND / CONSTRUCTION	TRA / APPLICATION	ARTICLE #	AVERAGE WEIGHT	OTD [32ND]	OVERALL DIAMETER	OVERALL WIDTH
SMALL TUBELESS	14.00R24 ‡	1*	G2A	G-2	263354	307	32	53.2	14.6
	16.00R24 ‡	1*	G2A	G-2	284971	433	36	58.0	16.5
	17.5R25	1*	EG2	E2/G2	296341	319	34	52.7	17.3

‡ = For use on semi drop center rim only, not for use on Flat Base Rim.



\* SNOW SERVICE

V-STEEL SNOW WEDGE

RADIAL

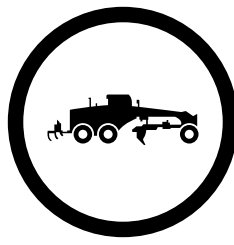
**VSW**

**G-2**

- Developed for Machines used in Snow Removal
- Suitable for Icy, Packed or Soft Snow Surfaces
- Studs or Chains Not Required
- Heat Resistant Compounding for High-Speed Use

CATEGORY	SIZE	PLY / STAR RATING	COMPOUND / CONSTRUCTION	TRA / APPLICATION	ARTICLE #	AVERAGE WEIGHT	OTD [32ND]	OVERALL DIAMETER	OVERALL WIDTH
SMALL TUBELESS	14.00R24 ‡	1*	G2A	G-2	293970	331	30	53.2	14.6
	16.00R24 ‡	1*	G2A	G-2	293997	458	28	58.5	16.4
	17.5R25	1*	DG2	G-2	420387	382	34	52.8	17.3

‡ = For use on semi drop center rim only, not for use on Flat Base Rim.



\* SNOW SERVICE

V-STEEL SNOW WEDGE ALL SEASON

RADIAL

**VSWAS**

**G-2**

- Excellent Traction in Winter Conditions, Minimizing the Need for Chains
- Very Capable in Gravel and Soft, Sandy Conditions
- Cut-resistant Compound Contributes to Long Service Life
- Excellent Retreadability

CATEGORY	SIZE	PLY / STAR RATING	COMPOUND / CONSTRUCTION	TRA / APPLICATION	ARTICLE #	AVERAGE WEIGHT	OTD [32 <sup>ND</sup> ]	OVERALL DIAMETER	OVERALL WIDTH
SMALL TUBELESS	17.5R25	1*	G2A	G-2	4682	327	35	52.9	17.2



V-STEEL ULTRA TRACTION

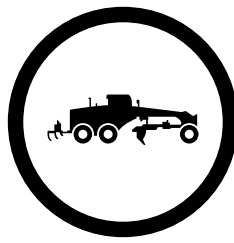
RADIAL

**VUT**

**G-2, L-2**

- Non-Directional Tread Pattern
- Self-Cleaning Tread Design
- Exceptional Traction and Flotation
- Lighter Weight provides Superior Maneuverability and Fuel Consumption

CATEGORY	SIZE	PLY / STAR RATING	COMPOUND / CONSTRUCTION	TRA / APPLICATION	ARTICLE #	AVERAGE WEIGHT	OTD [32 <sup>ND</sup> ]	OVERALL DIAMETER	OVERALL WIDTH
SMALL TUBELESS	13.00R24 +	1*	G2A	G-2	299804	231	32	50.8	14.1
	14.00R24	1*	G2A	G-2	293954	277	32	53.3	15.5
	15.5R25	2*	D2A	L-2	424609	245	34	50.0	15.1
	17.5R25	1*	DG2	G-2	422827	296	35	52.8	17.5
	20.5R25	1*	DG2	L-2	420344	394	39	58.0	21.0
	23.5R25	1*	DG2	L-2	422703	688	42	63.0	24.4



V-STEEL J-TRACTION

RADIAL

**VJT**

**L-3**

- Innovative Non-Directional Tread Pattern
- Pattern Reduces Vibrations, and achieves Higher Riding Comfort, Long-Standing Grip and Long Tread Life
- Suitable for Construction and Multi-Purpose Operations

CATEGORY	SIZE	PLY / STAR RATING	COMPOUND / CONSTRUCTION	TRA / APPLICATION	ARTICLE #	AVERAGE WEIGHT	OTD [32 <sup>ND</sup> ]	OVERALL DIAMETER	OVERALL WIDTH
SMALL TUBELESS	20.5R25	1*	DG2	L-3	3994	496	42		





**LOADER / DOZER TIRES**



## PLY/STAR RATINGS

	E-3 L-3	E3/L3	E3/L3 L-3	E-4 L-4	E4/L4 L-4	G-2 L-2	G-2 L-2	L-2	L-3	L-3 L-4	L-3	L-4	L-4	L-5	L-5	L-5	L-5	L-5S	L-5S	L-5S
	VL2	VLT	VTS	VLTS	VSNT	VSW	VUT	VKT	RL	VJT	VMT	RLS	VSNL	DL	VSDL	VSDR	VSDT	STMS	VSMS	VSMS2
8.25R15															2*					
14.5R15															2*					
9.00R20																			2*	
12.00-24																		20		
14.00R24																			2*	
15.5R25							2*								1*					
17.5R25						1*	1*	1*		1*	1*				1*					2*
17.5-25	16								16					16				20		
18.00R25																			1*, 2*	
550/65R25			1*																	
600/65R25						1*														
650/65R25			1*																	
20.5R25						MS	1*	1*		1*	1*				1*	1*, 2*				
20.5-25	16								16											
23.5R25		MS		MS		MS	1*	1*		1*	1*, 2*				1*, 2*		1*			
23.5-25	20								20											
26.5R25		MS			MS			1*		1*	1*				1*, 2*		1*		2*	2*
26.5-25	20											26		20				32, 36		
29.5R25		MS			MS					2*	1*				1*, 2*		2*			
29.5-25												28		28						
29.5R29					2*										2*		1*, 2*		2*	2*
29.5-29																		34		
35/65R33					MS								2*		1*, 2*		2*			
35/65-33														42				42		
750/65R25		MS	1*																	
775/65R29			1*																	
875/65R29			MS	MS																
45/65R39															1*					
45/65R45													2*		1*, 2*					
45/65-45														58				58		
50/65R51															2*					
50/65-51															62					
55.5/80R57															2*					
60/80R57															2*					
65/65-57															62					

### NOTICE:

Bridgestone tires are subject to an ongoing development program. Specifications are current as of February 15, 2016 and are subject to change without notice. Although great care has been taken in producing this guide, we can accept no responsibility for any loss or damage resulting from undetected errors, omissions or misprints which may have occurred. For complete information regarding tire specifications, consult your local Bridgestone dealer or contact a Bridgestone OTR representative.

Customer Service: **800-572-8905**

**OTRCUSTOMERSERVICE@BFUSA.COM**



V-LUG 2

BIAS

**VL2**

**E-3, L-3**

- Non-Directional Pattern
- Rough Terrain Traction
- Heat and Cool Resistant

CATEGORY	SIZE	PLY / STAR RATING	COMPOUND / CONSTRUCTION	TRA / APPLICATION	ARTICLE #	AVERAGE WEIGHT	OTD [32 <sup>ND</sup> ]	OVERALL DIAMETER	OVERALL WIDTH
SMALL TUBELESS	17.5-25	16	D2A	L-3	3791	278	38		
	20.5-25	16	D2A	E-3	3790	403	42		
	23.5-25	20	D2A	L-3	5309	642	54		
	26.5-25	20	DE2	E-3	3553	807	55	68.4	26.9



V-STEEL L-TRACTION

RADIAL

**VLT**

**E3/L3**

- Radial Traction Pattern provides Increased Productivity, Longer Life, and Maneuverability
- Self-Cleaning, Non-Directional Tread Pattern provides Even Wear
- Large Contact Footprint provides Excellent Traction and Flotation and Improved Rider Comfort
- Suitable for Wet, Soft or Muddy Surfaces

CATEGORY	SIZE	PLY / STAR RATING	COMPOUND / CONSTRUCTION	TRA / APPLICATION	ARTICLE #	AVERAGE WEIGHT	OTD [32 <sup>ND</sup> ]	OVERALL DIAMETER	OVERALL WIDTH
SMALL TUBELESS	23.5R25	MS	DE2	E3/L3	421960	799	54	63.9	24.3
	26.5R25	MS	DE2	E3/L3	421979	1,040	57	68.8	26.9
	29.5R25	MS	DE2	E3/L3	421987	1,303	60	73.9	30.0
	750/65R25	MS	DE2	E3/L3	420220	1,024	54	64.0	30.1





V-STEEL TRACTION AND STABILITY

RADIAL

**VTS**

**E3/L3, L-3**

- Designed for Stability and Operator Comfort
- Design features Stone Ejectors
- Self-Cleaning Tread Design for Optimum Traction
- Designed Primarily for Wheeled Loaders

CATEGORY	SIZE	PLY / STAR RATING	COMPOUND / CONSTRUCTION	TRA / APPLICATION	ARTICLE #	AVERAGE WEIGHT	OTD [32ND]	OVERALL DIAMETER	OVERALL WIDTH
SMALL TUBELESS	550/65R25	1*	D2A	L-3	429821	525	41	53.1	21.5
	650/65R25	1*	D2A	L-3	424099	678	47	59.1	25.3
	750/65R25	1*	D2A	L-3	429838	1,003	52		
LARGE TUBELESS	775/65R29	1*	D2A	L-3	424277	1,158	54	68.5	30.5
	875/65R29	M5	DE2	E3/L3	431283	1,559	60	73.4	33.5



V-STEEL L-TRACTION S

RADIAL

**VLTS**

**E-4, E4/L4**

- Excellent Traction on Gravel and Packed Earth
- Deep Tread for Extra-Long Tread life
- Self-Cleaning Tread Design
- Suitable for Rocky or Gravel Surfaces in Mines, Quarries and Construction Sites

CATEGORY	SIZE	PLY / STAR RATING	COMPOUND / CONSTRUCTION	TRA / APPLICATION	ARTICLE #	AVERAGE WEIGHT	OTD [32ND]	OVERALL DIAMETER	OVERALL WIDTH
SMALL TUBELESS	23.5R25	M5	DE2	E-4	422738	875	68	63.6	24.1
LARGE TUBELESS	875/65R29	M5	DE2	E4/L4	000470	1,551	76	74.0	33.8



V-STEEL N-TRACTION

RADIAL

**VSNT**

**E4/L4, L-4**

- Deep Tread Resists Cuts and Impacts
- Designed for Excellent Traction in Moderate to Severe Conditions
- Radial 1\*/2\* Construction for Heavy Duty Performance
- Minimizes Sidewall Cuts and Provides Longitudinal Traction

CATEGORY	SIZE	PLY / STAR RATING	COMPOUND / CONSTRUCTION	TRA / APPLICATION	ARTICLE #	AVERAGE WEIGHT	OTD [32 <sup>ND</sup> ]	OVERALL DIAMETER	OVERALL WIDTH
SMALL TUBELESS	26.5R25	MS	DE2	E4/L4	423971	1,234	72	70.0	27.0
LARGE TUBELESS	29.5R25	MS	DE2	E4/L4	424196	1,589	76	75.0	30.2
	29.5R29	2*	D2A	L-4	3991	1,695	75	78.7	30.5
	35/65R33	MS	DUH	L-4	3789	2,332	79	81.7	



V-STEEL SNOW WEDGE

\* SNOW SERVICE

RADIAL

**VSW**

**G-2, L-2**

- Developed for Machines used in Snow Removal
- Suitable for Icy, Packed or Soft Snow Surfaces
- Studs or Chains Not Required
- Heat Resistant Compounding for High-Speed Use

CATEGORY	SIZE	PLY / STAR RATING	COMPOUND / CONSTRUCTION	TRA / APPLICATION	ARTICLE #	AVERAGE WEIGHT	OTD [32 <sup>ND</sup> ]	OVERALL DIAMETER	OVERALL WIDTH
SMALL TUBELESS	17.5R25	1*	DG2	G-2	420387	382	34	52.8	17.3
	600/65R25	1*	D2A	L-2	431742	615	40	56	23.6
	20.5R25	MS	DE2	L-2	422851	527	38	57.9	20.9
	23.5R25	MS	DE2	G-2	423750	739	40	62.8	24.4



V-STEEL ULTRA TRACTION

RADIAL

**VUT**

**G-2, L-2**

- Non-Directional Tread Pattern
- Self-Cleaning Tread Design
- Exceptional Traction and Flotation
- Lighter Weight provides Superior Maneuverability and Fuel Consumption

CATEGORY	SIZE	PLY / STAR RATING	COMPOUND / CONSTRUCTION	TRA / APPLICATION	ARTICLE #	AVERAGE WEIGHT	OTD [32 <sup>ND</sup> ]	OVERALL DIAMETER	OVERALL WIDTH
SMALL TUBELESS	15.5R25	2*	D2A	L-2	424609	245	34	50.0	15.1
	17.5R25	1*	DG2	G-2	422827	296	35	52.8	17.5
	20.5R25	1*	DG2	L-2	420344	394	39	58.0	21.0
	23.5R25	1*	DG2	L-2	422703	688	42	63.0	24.4



V-STEEL K-TRACTION

RADIAL

**VKT**

**L-2**

- Directional Tread Pattern
- Cut Resistant Tread Design for Even Wear
- Excellent Traction and Flotation
- Ideal for Soft Muddy Surfaces

CATEGORY	SIZE	PLY / STAR RATING	COMPOUND / CONSTRUCTION	TRA / APPLICATION	ARTICLE #	AVERAGE WEIGHT	OTD [32 <sup>ND</sup> ]	OVERALL DIAMETER	OVERALL WIDTH
SMALL TUBELESS	17.5R25	1*	D2A	L-2	263389	364	34	52.7	17.3
	20.5R25	1*	D2A	L-2	263397	478	38	57.9	20.9
	23.5R25	1*	D2A	L-2	263400	695	42	63.1	24.1
	26.5R25	1*	D2A	L-2	275611	995	49	68.2	26.7



R-LUG

BIAS

**RL**

**L-3**

- Non-Directional Pattern for Outstanding Rough Terrain Traction
- Special Compounds to Resist Heat and Cutting
- Exceptional Cut Resistance
- Designed for Operating on Rock, Coal and Earth Surfaces

CATEGORY	SIZE	PLY / STAR RATING	COMPOUND / CONSTRUCTION	TRA / APPLICATION	ARTICLE #	AVERAGE WEIGHT	OTD [32 <sup>ND</sup> ]	OVERALL DIAMETER	OVERALL WIDTH
SMALL TUBELESS	17.5-25	16	D2A	L-3	425605	268	37	52.9	17.1
	20.5-25	16	D2A	L-3	261068	413	42	58.9	20.7
	23.5-25	20	D2A	L-3	261106	647	55	63.9	23.6



V-STEEL J-TRACTION

RADIAL

**VJT**

**L-3, L-4**

- Innovative Non-Directional Tread Pattern
- Pattern Reduces Vibrations, and achieves Higher Riding Comfort, Long-Standing Grip and Long Tread Life
- Suitable for Construction and Multi-Purpose Operations

CATEGORY	SIZE	PLY / STAR RATING	COMPOUND / CONSTRUCTION	TRA / APPLICATION	ARTICLE #	AVERAGE WEIGHT	OTD [32 <sup>ND</sup> ]	OVERALL DIAMETER	OVERALL WIDTH
SMALL TUBELESS	17.5R25	1*	D2A	L-3	431538	366	38	53.2	17.4
	20.5R25	1*	D2A	L-3	429311	502	42	58.3	20.9
	20.5R25	1*	DC2	L-3	3994	496	42		
	23.5R25	1*	D2A	L-3	431198	757	44	63.0	24.3
	26.5R25	1*	D2A	L-3	431215	1,003	48	68.4	26.9
LARGE TUBELESS	29.5R25	1*	D2A	L-3	431555	1,237	53	73.4	30.0
	29.5R25	2*	D2A	L-4	4071	1,260	53	73.4	30.0



V-STEEL M-TRACTION

RADIAL

**VMT**

**L-3**

- Non-Directional Tread Pattern for Even Wear
- Cool Running, Heat Resistant Compound
- Excellent Traction in a Variety of Conditions

CATEGORY	SIZE	PLY / STAR RATING	COMPOUND / CONSTRUCTION	TRA / APPLICATION	ARTICLE #	AVERAGE WEIGHT	OTD [32 <sup>ND</sup> ]	OVERALL DIAMETER	OVERALL WIDTH
SMALL TUBELESS	17.5R25	1*	D2A	L-3	419346	376	38	52.7	17.3
	20.5R25	1*	D2A	L-3	418110	529	42	58.3	20.9
	23.5R25	1*	D2A	L-3	418137	782	44	63.0	24.3
	23.5R25	2*	D2A	L-3	418773	722	44	63.0	24.3
	26.5R25	1*	D2A	L-3	419672	1,033	48	68.3	26.9
LARGE TUBELESS	29.5R25	1*	D2A	L-3	419680	1,326	53	73.4	30.0



R-LUG S

BIAS

**RLS**

**L-4**

- Deep Non-Directional Tread Pattern
- Special Compounds to Resist Heat and Cutting
- Excellent Self-Cleaning Tread Design
- Designed for Operating on Rock, Coal and Earth Surfaces where Serviceability and Tread Cutting are Problems

CATEGORY	SIZE	PLY / STAR RATING	COMPOUND / CONSTRUCTION	TRA / APPLICATION	ARTICLE #	AVERAGE WEIGHT	OTD [32 <sup>ND</sup> ]	OVERALL DIAMETER	OVERALL WIDTH
SMALL TUBELESS	26.5-25	26	D2A	L-4	3551	1,068	84	70.3	27.6
LARGE TUBELESS	29.5-25	28	D2A	L-4	275328	1,432	94	75.3	30.9



V-STEEL N-LUG

RADIAL

**VSNL**

**L-4**

- Excellent Performance in Severe Rock Applications
- Durable Heavy-Duty Casing
- Multi-Purpose Loader Operations
- Rock Pattern Design offers Outstanding Traction, Stability and Comfort
- Sidewall Protection reduces Cuts and other Damage

CATEGORY	SIZE	PLY / STAR RATING	COMPOUND / CONSTRUCTION	TRA / APPLICATION	ARTICLE #	AVERAGE WEIGHT	OTD [32 <sup>ND</sup> ]	OVERALL DIAMETER	OVERALL WIDTH
LARGE TUBELESS	35/65R33	2*	D2A	L-4	429277	2,281	79	81.7	34.6
GIANT TUBELESS	45/65R45	2*	D2A	L-4	429855	4,825	95	107.5	44.2



**D-LUG**

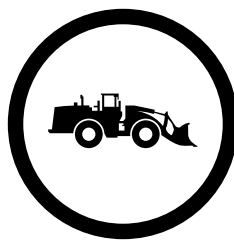
**BIAS**

**DL**

**L-5**

- Extra-Deep Tread and Rugged Casing for Rough Terrain
- Exceptional Cut and Impact Resistance
- Extra-Deep, Specially Compounded Rubber and Shoulder Ribs ensure Maximum Serviceability, Excellent Traction and Stability
- Designed for Severe Rocky Surfaces

CATEGORY	SIZE	PLY / STAR RATING	COMPOUND / CONSTRUCTION	TRA / APPLICATION	ARTICLE #	AVERAGE WEIGHT	OTD [32 <sup>ND</sup> ]	OVERALL DIAMETER	OVERALL WIDTH
SMALL TUBELESS	17.5-25	16	D2A	L-5	261173	485	88	55.5	17.5
	26.5-25	20	D2A	L-5	275530	1,363	122	70.8	27.3
LARGE TUBELESS	29.5-25	28	D2A	L-5	423408	1,856	133	74.8	30.2
	35/65-33	42	D2V	L-5	422150	2,930	122	81.7	35.3
GIANT TUBELESS	45/65-45	58	D2V	L-5	419400	5,933	146	107.5	45.1
	50/65-51	62	D2A	L-5	429515	7,879	161	120.9	49.6
	50/65-51	62	D2V	L-5	417971	8,436	161	120.9	49.6
	65/65-57	62	D2V	L-5	424080	15,883	180	147.0	64.6



V-STEEL D-LUG

RADIAL

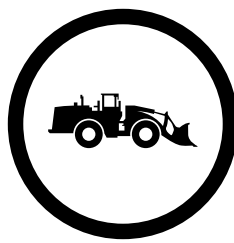
**VSDL**

**L-5**

- Extra-Deep Tread and Shoulder Protection offer Cut and Impact Resistance, Stability, and Ride Comfort
- Excellent Traction in Severe or Rocky Conditions
- Designed for Extra-Heavy Duty Loader Performance

CATEGORY	SIZE	PLY / STAR RATING	COMPOUND / CONSTRUCTION	TRA / APPLICATION	ARTICLE #	AVERAGE WEIGHT	OTD [32ND]	OVERALL DIAMETER	OVERALL WIDTH
SMALL TUBE TYPE	8.25R15	2*	D2A	L-5	424544	158	60	34.6	9.8
SMALL TUBELESS	14.5R15	2*	D2A	L-5	152455	212	60	35.4	14.1
	15.5R25	1*	D2A	L-5	431181	448	81	52.3	15.5
	17.5R25	1*	D2A	L-5	423165	585	86	55.1	17.3
	20.5R25	1*	D2A	L-5	421855	881	99	61.1	20.9
	23.5R25	1*	D2A	L-5	420565	1,175	110	65.8	24.1
	23.5R25	2*	D2A	L-5	422428	1,162	110	65.8	24.1
	26.5R25	1*	D2A	L-5	420573	1,582	120	70.5	26.9
LARGE TUBELESS	26.5R25	2*	D2A	L-5	421332	1,594	120	70.5	26.9
	29.5R25	1*	D2A	L-5	420581	2,007	131	75.8	30.2
	29.5R25	2*	D2A	L-5	423432	2,045	131	75.8	30.2
	29.5R29	2*	D2A	L-5	421758	2,159	132	79.1	30.6
	35/65R33	1*	D2A	L-5	419974	2,717	120	81.7	34.6
	35/65R33	2*	D2A	L-5	425010	2,720	120	81.7	34.6
	35/65R33	2*	IDU	L-5	429872	2,720	120	81.7	34.6
GIANT TUBELESS	45/65R39	1*	D2A	L-5	423378	4,848	146	101.6	42.3
	45/65R39	1*	D2A	L-5	423386	4,842	146	101.6	42.3
	45/65R45	1*	D2A	L-5	419036	5,492	141	107.5	44.2
	45/65R45	2*	D2A	L-5	426047	5,492	141	107.5	44.2
	45/65R45	2*	D2A	L-5	422843	5,484	141	107.5	44.2
	50/65R51	2*	D2A	L-5	428053	7,992	161	120.9	50.3
	55.5/80R57	2*	D2A	L-5	422568	13,544	158	147.2	54.9
60/80R57	2*	D2A	L-5	430229	15,200	149	155.6	58.7	





V-STEEL SUPER DEEP RADIAL

RADIAL

**VSDR**

**L-5**

- L5 Premium, Rigid Pattern with Extra Long Wear Life
- Improved Cut Resistance
- Specially Designed for Loaders and Dozers
- Ideal for Extremely Rocky Surfaces such as Underground Mining, Open Pits, Quarries and Waste Operations

CATEGORY	SIZE	PLY / STAR RATING	COMPOUND / CONSTRUCTION	TRA / APPLICATION	ARTICLE #	AVERAGE WEIGHT	OTD [32 <sup>ND</sup> ]	OVERALL DIAMETER	OVERALL WIDTH
SMALL TUBELESS	20.5R25	1*	D2A	L-5	000996	862	98	61.1	20.9
	20.5R25	2*	D2A	L-5	000997	871	98	61.1	20.9



V-STEEL SUPER DEEP TRACTION

RADIAL

**VSDT**

**L-5**

- Excellent Traction on Moderate to Severe Conditions
- Extra-Heavy Duty 1\* and 2\* Radial Casing Designs
- Extra-Deep Tread for Excellent Traction, Comfortable Ride, Superior Cut Resistance and Long Tread Life.
- Wide Tread helps Minimize Sidewall Cuts

CATEGORY	SIZE	PLY / STAR RATING	COMPOUND / CONSTRUCTION	TRA / APPLICATION	ARTICLE #	AVERAGE WEIGHT	OTD [32 <sup>ND</sup> ]	OVERALL DIAMETER	OVERALL WIDTH
SMALL TUBELESS	23.5R25	1*	D2A	L-5	423548	1,135	100	65.4	24.4
	26.5R25	1*	D2A	L-5	423955	1,494	111	69.9	27.4
LARGE TUBELESS	29.5R25	2*	D2A	L-5	424145	1,902	121	74.9	30.7
	29.5R29	1*	D2A	L-5	424412	1,956	121	78.3	30.7
	29.5R29	2*	D2A	L-5	424420	1,956	121	78.3	30.7
	35/65R33	2*	D2A	L-5	002111	2,747	121	81.7	35.0



SMOOTH TREAD MS

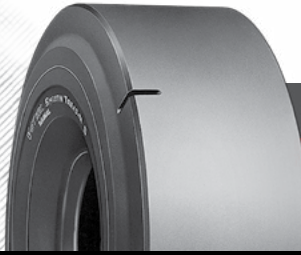
BIAS

**STMS**

**L-5S**

- Exceptional Cut and Impact Protection
- Smooth, Extra-Deep, and Specially Compounded Rubber ensures Maximum Resistance to Cutting and Wearing
- Designed for Severe, Rocky Surfaces, such as those in Open Pits and Quarries

CATEGORY	SIZE	PLY / STAR RATING	COMPOUND / CONSTRUCTION	TRA / APPLICATION	ARTICLE #	AVERAGE WEIGHT	OTD [32 <sup>ND</sup> ]	OVERALL DIAMETER	OVERALL WIDTH
SMALL TUBE TYPE	12.00-24	20	D2A	L-5S	295256	350	69	50.2	12.6
SMALL TUBELESS	17.5-25	20	D2A	L-5S	261289	627	87	54.5	17.7
	26.5-25	32	D2A	L-5S	275573	1,869	120	70.8	26.8
	26.5-25	36	D2A	L-5S	421863	1,904	120	70.8	26.8
LARGE TUBELESS	29.5-29	34	D2A	L-5S	419095	2,384	130	79.6	29.5
	35/65-33	42	D2V	L-5S	424874	3,298	122	81.7	35.3
GIANT TUBELESS	45/65-45	58	D2V	L-5S	422657	6,681	146	107.5	45.1



V-STEEL SMOOTH TREAD MINE SERVICE

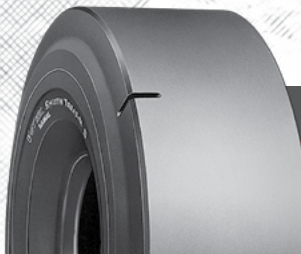
RADIAL

**VSMS**

**L-5S**

- Maximum Cut and Wear Resistance
- Extra-Deep Tread for Severe Conditions
- Extra Heavy Duty 1\* and 2\* Radial Casing Design
- Reinforced All-Steel Radial Casing

CATEGORY	SIZE	PLY / STAR RATING	COMPOUND / CONSTRUCTION	TRA / APPLICATION	ARTICLE #	AVERAGE WEIGHT	OTD [32 <sup>ND</sup> ]	OVERALL DIAMETER	OVERALL WIDTH
SMALL TUBE TYPE	9.00R20	2*	D2A	L-5S	150908	236	64	41.5	10.2
	14.00R24	2*	D2A	L-5S	211240	603	91	54.8	15.4
SMALL TUBELESS	17.5R25	2*	D2A	L-5S	422908	645	86	54.1	17.3
	18.00R25	1*	D2A	L-5S	419397	1,113	105	65.9	20.2
	18.00R25	2*	D2A	L-5S	422282	1,092	106	65.9	20.2
	26.5R25	2*	D2A	L-5S	422096	1,777	120	69.9	26.9
LARGE TUBELESS	29.5R29	2*	D2A	L-5S	422134	2,449	132	79.1	30.2



V-STEEL SMOOTH TREAD MINE SERVICE 2

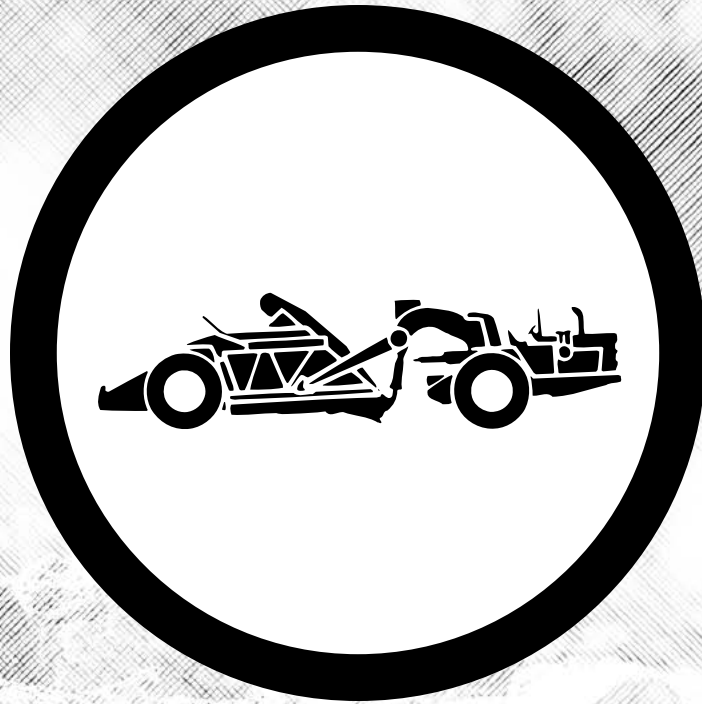
RADIAL

**VSMS2**

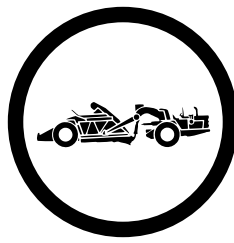
**L-5S**

- Extra-Deep Tread for Severe Conditions
- Extra Heavy Duty 2\* Radial Casing Design
- Sidewall Design Improves Cut Resistance by 30% and Service Life by 5% compared to Bridgestone VSMS

CATEGORY	SIZE	PLY / STAR RATING	COMPOUND / CONSTRUCTION	TRA / APPLICATION	ARTICLE #	AVERAGE WEIGHT	OTD [32 <sup>ND</sup> ]	OVERALL DIAMETER	OVERALL WIDTH
SMALL TUBE TYPE	26.5R25	2*	D2A	L-5S	4604	1,777	120	69.9	27.7
	29.5R29	2*	D2A	L-5S	4605	2,449	132	79.1	31.2



## **SCRAPER TIRES**



## PLY/STAR RATINGS

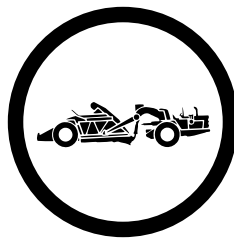
	E-2	E-3	E-3	E-3	L-2
	VKT	VLT	VMT	VRL	VUT
17.5R25	1*				
20.5R25			2*		1*
23.5R25	2*				1*
23.5-25			2*		
29.5R35					
29.5R29	2*				
33.25R29		2*			
33.25R35		2*			
37.25R35		2*			
37.25-35					
37.5R39	2*				
40.5/75R39		2*		2*	

**NOTICE:**

Bridgestone tires are subject to an ongoing development program. Specifications are current as of February 15, 2016 and are subject to change without notice. Although great care has been taken in producing this guide, we can accept no responsibility for any loss or damage resulting from undetected errors, omissions or misprints which may have occurred. For complete information regarding tire specifications, consult your local Bridgestone dealer or contact a Bridgestone OTR representative.

Customer Service: **800-572-8905**

**OTRCUSTOMERSERVICE@BFUSA.COM**



V-STEEL K-TRACTION

RADIAL

**VKT**

**E-2**

- Directional Tread Pattern
- Cut Resistant Tread Design for Even Wear
- Excellent Traction and Flotation
- Ideal for Soft or Muddy Surfaces

CATEGORY	SIZE	PLY / STAR RATING	COMPOUND / CONSTRUCTION	TRA / APPLICATION	ARTICLE #	AVERAGE WEIGHT	OTD [32 <sup>ND</sup> ]	OVERALL DIAMETER	OVERALL WIDTH
SMALL TUBELESS	17.5R25	1*	EG2	E-2	296341	319	34	52.7	17.3
	23.5R25	2*	E1A	E-2	261351	655	42	63.1	24.1
LARGE TUBELESS	29.5R29	2*	E2A	E-2	276235	1,254	55		
	37.5R39	2*	E1A	E-2	419915	2,661	64	99.4	38.7



V-STEEL L-TRACTION

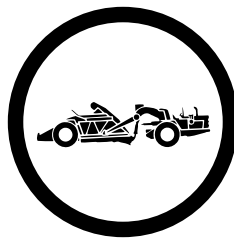
RADIAL

**VLT**

**E-3**

- Radial Traction Pattern provides Increased Productivity and Longer Life
- Self-Cleaning, Non-Directional Tread Pattern Provides Even Wear
- Large Contact Footprint provides Excellent Traction and Flotation and Improved Ride Comfort

CATEGORY	SIZE	PLY / STAR RATING	COMPOUND / CONSTRUCTION	TRA / APPLICATION	ARTICLE #	AVERAGE WEIGHT	OTD [32 <sup>ND</sup> ]	OVERALL DIAMETER	OVERALL WIDTH
LARGE TUBELESS	33.25R29	2*	E2A	E-3	427645	1,826	68	81.7	34.0
	37.25R35	2*	E1A	E-3	427985	2,530	75	94.0	37.6
	37.25R35	2*	E2A	E-3	428002	2,654	75	94.0	37.6
	40.5/75R39	2*	E1A	E-3	428172	3,340	74	102.6	39.4
	40.5/75R39	2*	E2A	E-3	428138	3,581	74	102.6	39.4



V-STEEL M-TRACTION

RADIAL

**VMT**

**E-3**

- Non-Directional Tread Pattern for Even Wear and Resistance to Heat Buildup
- Excellent Traction in a Variety of Conditions

CATEGORY	SIZE	PLY / STAR RATING	COMPOUND / CONSTRUCTION	TRA / APPLICATION	ARTICLE #	AVERAGE WEIGHT	OTD [32 <sup>ND</sup> ]	OVERALL DIAMETER	OVERALL WIDTH
SMALL TUBELESS	20.5R25	2*	E1A	E-3	418161	514	42	58.3	20.9
	23.5R25	2*	E1A	E-3	418196	708	44	63.0	24.3



V-STEEL R-LUG

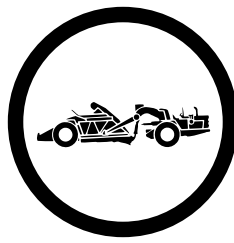
RADIAL

**VRL**

**E-3**

- Rock Service Pattern
- Durable Casing Design Resists Fatigue
- Tough Lug Pattern for Excellent Traction and Cut Resistance
- Suitable for Rocky or Gravel Surfaces in Mines, Quarries and Construction Sites

CATEGORY	SIZE	PLY / STAR RATING	COMPOUND / CONSTRUCTION	TRA / APPLICATION	ARTICLE #	AVERAGE WEIGHT	OTD [32 <sup>ND</sup> ]	OVERALL DIAMETER	OVERALL WIDTH
LARGE TUBELESS	40.5/75R39	2*	E1A	E-3	418501	3,012	61	101.9	39.4



V-STEEL ULTRA TRACTION

RADIAL

**VUT**

**L-2**

- Non-Directional Tread Pattern
- Self-Cleaning Tread Design
- Exceptional Traction and Flotation
- Lighter Weight provides Superior Maneuverability and Fuel Consumption

CATEGORY	SIZE	PLY / STAR RATING	COMPOUND / CONSTRUCTION	TRA / APPLICATION	ARTICLE #	AVERAGE WEIGHT	OTD [32ND]	OVERALL DIAMETER	OVERALL WIDTH
SMALL TUBELESS	20.5R25	1*	DG2	L-2	420344	394	39	58.0	21.0
	23.5R25	1*	DG2	L-2	422703	688	42	63.0	24.4





# SPECIALTY



## SPECIALTY TIRES



**PLY/STAR RATINGS**

	E-2	E-2	E-2	E-2	E-2 G-2 L-2	E-3	E-4	E-4	E-7	G-2 L-2	L-4	L-4	L-5	L-5	L-5	L-5	L-5	L-5S	L-5S
	VGT	VHS	VKT	VSB	VSW	RL	VMTS	VRLS	VSJ	VUT	VSNL	VSNT	DL	VSDL	VSDL2	VSDR	VSDT	STMS	VSMS
95/65-15																			
7.50-16																			
8.25R15														2*					
14/70-20																			
9.00R20																			2*
9.00-20																			
10.00R15															2*				
12.00R20															2*				2*
12.00-20						18													
12.00R24																			2*
12.00-24																		20	
14.00R20											2*								
14.00R24			3*	3*	1*														2*
14.00-24																		20	
14.00R25				3*			3*	3*											
14.5R15														2*					
15.5R25									2*										
16.00R25							2*												
17.5R25									1*										
17.5-25																		20	
20.5R25					MS											1*			
21.00R25									.										
23.5R25														2*					
24R21	1*																		
26.5R25																			2*
26.5-25																		32, 36	
29.5R25														2*			2*		
29.5-25												28							
29.5R29																			2*
29.5-29																		34	
35/65R33												MT		2*					
35/65-33																		42	
385/95R24		3*																	
385/95R25		3*			3*														
445/80R25	2*																		
445/95R25		2*																	
525/80R25		2*																	
36.00R51		2*																	

**NOTICE:**  
 Bridgestone tires are subject to an ongoing development program. Specifications are current as of February 15, 2016 and are subject to change without notice. Although great care has been taken in producing this guide, we can accept no responsibility for any loss or damage resulting from undetected errors, omissions or misprints which may have occurred. For complete information regarding tire specifications, consult your local Bridgestone dealer or contact a Bridgestone OTR representative.

Customer Service: **800-572-8905** | **OTRCUSTOMERSERVICE@BFUSA.COM**

# SPECIALTY



FIREFIGHTING

MOBILE CRANE

V-STEEL G-TRACTION

RADIAL

## VGT

## E-2

- All-Terrain Radial Performance
- Cut Resistant Tread Design for Even Wear
- Designed for Fire and Rescue Vehicles, Military Vehicles, and Mobile Cranes
- Excellent Traction and Durability
- U.S. DOT Approved for On-Highway Use

CATEGORY	SIZE	PLY / STAR RATING	COMPOUND / CONSTRUCTION	TRA / APPLICATION	ARTICLE #	AVERAGE WEIGHT	OTD [32ND]	OVERALL DIAMETER	OVERALL WIDTH
SMALL TUBELESS	24R21 +	1*		E-2	418951	436	31	54.3	23.7
	445/80R25 ++	2*		E-2	424976	327	30	52.7	17.3

+ - for use on Firefighting vehicles only    ++ - for use on Cranes



MOBILE CRANE

SMOOTH TREAD MS

RADIAL

## VHS

## E-2

- Specially Designed for Mobile Crane Service
- Non-Directional Tread Pattern
- Smooth Wearing, Low Noise, Low Vibration Tread Pattern
- U.S. DOT Approved for On-Highway Use

CATEGORY	SIZE	PLY / STAR RATING	COMPOUND / CONSTRUCTION	TRA / APPLICATION	ARTICLE #	AVERAGE WEIGHT	OTD [32ND]	OVERALL DIAMETER	OVERALL WIDTH
SMALL TUBE TYPE	385/95R24 +	3*		E-2	421790	315	29	53.4	15.1
SMALL TUBELESS	385/95R25 ++	3*		E-2	430824	320	29	53.4	15.1
	445/95R25 ++	2*		E-2	430841	440	32	58.4	17.1
	525/80R25 ++	2*		E-2	5300	491	39	58.3	21.1
GIANT TUBELESS	36.00R51 ◆	2*	E3A	E-2	430280	4,564	55	122.4	40.0

◆ - off highway use only    + - Speed Rating E    ++ - Speed Rating F

**SPECIALTY**



V-STEEL K-TRACTION

RADIAL

**VKT**

**E-2**

- Directional Tread Pattern for Excellent Traction
- Exceptional Stability and a Self-Cleaning Tread Pattern
- Excellent Traction and Flotation
- Ideal for Soft, Muddy Surfaces

CATEGORY	SIZE	PLY / STAR RATING	COMPOUND / CONSTRUCTION	TRA / APPLICATION	ARTICLE #	AVERAGE WEIGHT	OTD [32ND]	OVERALL DIAMETER	OVERALL WIDTH
SMALL TUBELESS	14.00R24 +	3*	E2A	E-2	263346	336	32	53.2	15.4

+ - For use on semi drop center rim only, not for use on Flat Base Rim.



V-STEEL S-BLOCK



LOGGING

RADIAL

**VSB**

**E-2**

- Logging, Multi-Purpose Mining and Heavy Axle Applications
- Heavy Duty All-Steel Radial Casing Design
- Traction Pattern for All Road Conditions and Maneuverability
- Suitable for both Gravel and Hard Parked Surfaces like Paved Roads
- Designed for Heavy-Duty Trucks and Trailers

CATEGORY	SIZE	PLY / STAR RATING	COMPOUND / CONSTRUCTION	TRA / APPLICATION	ARTICLE #	AVERAGE WEIGHT	OTD [32ND]	OVERALL DIAMETER	OVERALL WIDTH
SMALL TUBE TYPE	14.00R24	3*	E2A	E-2	299367	356	26	53.7	15.4
	14.00R24	3*		E-2	3356	358	30		
SMALL TUBELESS	14.00R25	3*	E2A	E-2	3360	363	26	53.7	15.4

# SPECIALTY



\* SNOW SERVICE

MOBILE CRANE

V-STEEL SNOW WEDGE

RADIAL

## VSW

## E-2, G-2, L-2

- Developed for Machines used in Snow Removal
- Suitable for Icy, Packed or Soft Snow Surfaces
- Studs or Chains Not Required
- Heat Resistant Compounding for High-Speed Use

CATEGORY	SIZE	PLY / STAR RATING	COMPOUND / CONSTRUCTION	TRA / APPLICATION	ARTICLE #	AVERAGE WEIGHT	OTD [32 <sup>ND</sup> ]	OVERALL DIAMETER	OVERALL WIDTH
SMALL TUBELESS	14.00R24 +	1*	G2A	G-2	293970	331	30	53.2	14.6
	385/95R25 ++	3*	DE2	E-2	425078	370	30	53.3	15.5
	20.5R25	MS	DE2	L-2	422851	527	38	57.9	20.9

+ - For use on Semidrop Center Rim only, not for use on Flat Base Rim  
 ++ - Mobile Crane use; U.S. DOT approved for On-Highway use



FORKLIFT

R-LUG

BIAS

## RL

## E-3

- Non-Directional Pattern for Outstanding Rough Terrain Traction
- Special Compounds to Resist Cutting
- Exceptional Cut Resistance
- Designed for Operating on Rock, Coal and Earth Surfaces

CATEGORY	SIZE	PLY / STAR RATING	COMPOUND / CONSTRUCTION	TRA / APPLICATION	ARTICLE #	AVERAGE WEIGHT	OTD [32 <sup>ND</sup> ]	OVERALL DIAMETER	OVERALL WIDTH
SMALL TUBE TYPE	12.00-20	18	E1A	E-3	285366	166	32	44.8	12.4

**SPECIALTY**



LOGGING

V-STEEL M-TRACTION S

RADIAL

**VMTS**

**E-4**

- Exceptional Side-Slip Resistance
- Non-Directional Tread Design ideal for Muddy or Soft Surfaces
- Wear Resistance for Longer Tread Life
- Applicable for Muddy or Soft Surfaces

CATEGORY	SIZE	PLY / STAR RATING	COMPOUND / CONSTRUCTION	TRA / APPLICATION	ARTICLE #	AVERAGE WEIGHT	OTD [32 <sup>ND</sup> ]	OVERALL DIAMETER	OVERALL WIDTH
SMALL TUBELESS	14.00R25	3*	E3A	E-4	295213	402	48	55.4	15.4
	16.00R25	2*	E2A	E-4	422347	606	57	60.4	17.7



LOGGING

V-STEEL R-LUG S

RADIAL

**VRLS**

**E-4**

- Deep Non-Directional Rock Service Tread Pattern
- Special Compounds Provide Excellent Wear and Cut Resistance
- Rock-Deep Tread with Tough Lug and Sidewall Protectors
- High Resistance to Cutting and Chipping for Long Tread Life

CATEGORY	SIZE	PLY / STAR RATING	COMPOUND / CONSTRUCTION	TRA / APPLICATION	ARTICLE #	AVERAGE WEIGHT	OTD [32 <sup>ND</sup> ]	OVERALL DIAMETER	OVERALL WIDTH
SMALL TUBELESS	14.00R25	3*	E2A	E-4	263419	427	49	55.2	15.4

**SPECIALTY**



V-STEEL JAMAL

SAND

RADIAL

**VSJ**

**E-7**

- Designed for Fire and Rescue, and Military Trucks
- Unique Tread Design ensures Maximum Flotation and Traction
- Designed for Operating on Desert or Soft Ground, as well as Paved Roads

CATEGORY	SIZE	PLY / STAR RATING	COMPOUND / CONSTRUCTION	TRA / APPLICATION	ARTICLE #	AVERAGE WEIGHT	OTD [32 <sup>ND</sup> ]	OVERALL DIAMETER	OVERALL WIDTH
SMALL TUBELESS	21.00R25			E-7	419362	741	28	68.0	23.2



V-STEEL ULTRA TRACTION



TELEHANDLER

RADIAL

**VUT**

**G-2, L-2**

- Non-Directional Tread Pattern
- Self-Cleaning Tread Design
- Exceptional Traction and Flotation
- Lighter Weight Provides Superior Maneuverability and Fuel Consumption

CATEGORY	SIZE	PLY / STAR RATING	COMPOUND / CONSTRUCTION	TRA / APPLICATION	ARTICLE #	AVERAGE WEIGHT	OTD [32 <sup>ND</sup> ]	OVERALL DIAMETER	OVERALL WIDTH
SMALL TUBELESS	15.5R25	2*	D2A	L-2	424609	245	34	50.0	15.1
	17.5R25	1*	DG2	G-2	422827	296	35	52.8	17.5



**SPECIALTY**



UNDERGROUND

V-STEEL N-LUG

RADIAL

**VSNL**

**L-4**

- Excellent Performance in Severe Rock Applications
- Durable Heavy-Duty Casing
- Rock Pattern Design offers Outstanding Traction, Stability and Comfort
- Sidewall Protection reduces Cuts and other Damage

CATEGORY	SIZE	PLY / STAR RATING	COMPOUND / CONSTRUCTION	TRA / APPLICATION	ARTICLE #	AVERAGE WEIGHT	OTD [32ND]	OVERALL DIAMETER	OVERALL WIDTH
SMALL TUBE TYPE	14.00R20	2*	D2A	L-4	157376	361	43	471	14.2



UNDERGROUND

V-STEEL N-TRACTION

RADIAL

**VSNT**

**L-4**

- Deep Tread Resists Cuts and Impacts
- Designed for Excellent Traction in Moderate to Severe Conditions
- Radial 1\*<sup>2</sup>\* Construction for Heavy Duty Performance
- Minimizes Sidewall Cuts and Provides Sure Longitudinal Traction

CATEGORY	SIZE	PLY / STAR RATING	COMPOUND / CONSTRUCTION	TRA / APPLICATION	ARTICLE #	AVERAGE WEIGHT	OTD [32ND]	OVERALL DIAMETER	OVERALL WIDTH
LARGE TUBELESS	35/65R33	MT	DUH	L-4	3789	2,332	79	81.7	

MT DUH - Underground Haulage and Loader / Dozer Service

**SPECIALTY**



UNDERGROUND

D-LUG

BIAS

**DL**

**L-5**

- Extra-Deep Tread and Rugged Casing for Rough Terrain
- Exceptional Cut and Impact Resistance
- Extra-Deep, Specially Compounded Rubber and Shoulder Ribs ensure Maximum Serviceability, Excellent Traction and Stability
- Designed for Severe Rocky Surfaces

CATEGORY	SIZE	PLY / STAR RATING	COMPOUND / CONSTRUCTION	TRA / APPLICATION	ARTICLE #	AVERAGE WEIGHT	OTD [32 <sup>ND</sup> ]	OVERALL DIAMETER	OVERALL WIDTH
LARGE TUBELESS	29.5-25	28	D2A	L-5	423408	1,856	133	74.8	30.2

# SPECIALTY



V-STEEL D-LUG



UNDERGROUND

LOGGING

RADIAL

## VSDL

## L-5

- Extra-Deep Tread and Shoulder Protection offer Cut and Impact Resistance, Stability, and Ride Comfort
- Excellent Traction in Severe Conditions
- Designed for Extra-Heavy Duty Performance
- Specially Designed Sidewall provides Extended Protection from Cutting
- Designed for Severe or Rocky Surfaces

CATEGORY	SIZE	PLY / STAR RATING	COMPOUND / CONSTRUCTION	TRA / APPLICATION	ARTICLE #	AVERAGE WEIGHT	OTD [32ND]	OVERALL DIAMETER	OVERALL WIDTH
SMALL TUBE TYPE	8.25R15	2*	D2A	L-5	424544	158	60	34.6	9.8
SMALL TUBELESS	14.5R15	2*	D2A	L-5	152455	212	60	35.4	14.1
	23.5R25	2*	D2A	L-5	422428	1,162	110	65.8	24.1
LARGE TUBELESS	29.5R25	2*	D2A	L-5	423432	2,045	131	75.8	30.2
	35/65R33	2*	IDU	L-5	429872	2,720	120	81.7	34.6

**SPECIALTY**



UNDERGROUND

LOGGING

V-STEEL D-LUG 2

RADIAL

**VSDL2**

**L-5**

- Extra-Deep Tread and Shoulder Protection offer Cut and Impact Resistance, Stability, and Ride Comfort
- Excellent Traction in Severe Conditions
- Designed for Extra-Heavy Duty Performance

CATEGORY	SIZE	PLY / STAR RATING	COMPOUND / CONSTRUCTION	TRA / APPLICATION	ARTICLE #	AVERAGE WEIGHT	OTD [32 <sup>ND</sup> ]	OVERALL DIAMETER	OVERALL WIDTH
SMALL TUBE TYPE	10.00R15	2*	D2A	L-5	157384	182	60	35.6	11.3
	12.00R20	2*	D2A	L-5	157392	325	72	46	12.6



UNDERGROUND

V-STEEL SUPER DEEP RADIAL

RADIAL

**VSDR**

**L-5**

- L5 Premium, Rigid Pattern with Extra-Long Wear Life
- Improved Cut Resistance
- Specially Designed for Loaders and Dozers
- Ideal for Extremely Rocky Surfaces such as Underground Mining, Open Pits, Quarries and Waste Operations

CATEGORY	SIZE	PLY / STAR RATING	COMPOUND / CONSTRUCTION	TRA / APPLICATION	ARTICLE #	AVERAGE WEIGHT	OTD [32 <sup>ND</sup> ]	OVERALL DIAMETER	OVERALL WIDTH
SMALL TUBELESS	20.5R25	1*	D2A	L-5	000996	862	98	61.1	20.9

**SPECIALTY**



UNDERGROUND

V-STEEL SUPER DEEP TRACTION

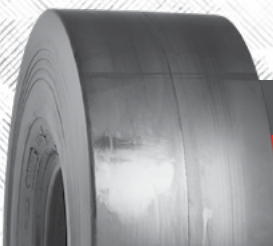
RADIAL

**VSDT**

**L-5**

- Excellent Traction on Moderate to Severe Conditions
- Extra-Heavy Duty 1\* and 2\* Radial Casing Designs
- Extra-Deep Tread for Excellent Traction, Comfortable Ride, Superior Cut Resistance and Long Tread Life.
- Wide Tread helps Minimize Sidewall Cuts

CATEGORY	SIZE	PLY / STAR RATING	COMPOUND / CONSTRUCTION	TRA / APPLICATION	ARTICLE #	AVERAGE WEIGHT	OTD [32ND]	OVERALL DIAMETER	OVERALL WIDTH
LARGE TUBELESS	29.5R25	2*	D2A	L-5	424145	1,902	121	74.9	30.7



UNDERGROUND

SMOOTH TREAD MS

BIAS

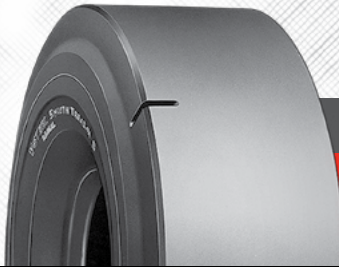
**STMS**

**L-5S**

- Extra Deep Tread for Maximum Life and Exceptional Cut Resistance
- STMS's Smooth, Extra-Deep, and Specially Compounded Rubber ensures Maximum Resistance to Cutting, Wearing, and Heat

CATEGORY	SIZE	PLY / STAR RATING	COMPOUND / CONSTRUCTION	TRA / APPLICATION	ARTICLE #	AVERAGE WEIGHT	OTD [32ND]	OVERALL DIAMETER	OVERALL WIDTH
SMALL TUBE TYPE	12.00-24	20	D2A	L-5S	295256	350	69	50.2	12.6
	14.00-24	20	D2A	L-5S	263303	534	98	54.1	14.4
SMALL TUBELESS	17.5-25	20	D2A	L-5S	261289	627	87	54.5	17.7
LARGE TUBELESS	26.5-25	32	D2A	L-5S	275573	1,869	120	70.8	26.8
	26.5-25	36	D2A	L-5S	421863	1,904	120	70.8	26.8
	29.5-29	34	D2A	L-5S	419095	2,384	130	79.6	29.5
	35/65-33	42	D2V	L-5S	424874	3,298	122	81.7	35.3

**SPECIALTY**



UNDERGROUND

V-STEEL SMOOTH TREAD

RADIAL

**VSMS**

**L-5S**

- Maximum Cut and Wear Resistance
- Extra-Deep Tread for Severe Conditions
- Extra-Heavy Duty 1\* and 2\* All-Steel Radial Casing Design

CATEGORY	SIZE	PLY / STAR RATING	COMPOUND / CONSTRUCTION	TRA / APPLICATION	ARTICLE #	AVERAGE WEIGHT	OTD [32ND]	OVERALL DIAMETER	OVERALL WIDTH
SMALL TUBE TYPE	9.00R20	2*	D2A	L-5S	150908	236	64	41.5	10.2
	12.00R20	2*	D2A	L-5S	150916	351	72	46.2	12.3
	12.00R24	2*	D2A	L-5S	150924	410	72	50.2	12.3
	14.00R24	2*	D2A	L-5S	211240	603	91	54.8	15.4
SMALL TUBELESS	26.5R25	2*	D2A	L-5S	422096	1,777	120	69.9	26.9
LARGE TUBELESS	29.5R29	2*	D2A	L-5S	422134	2,449	132	79.1	30.2



**DL** ..... **D-LUG** ..... 36, 44, 56, 63

**ELS2** [INDUSTRIAL] ..... **E-LUG S2** ..... 4, 5

**RL** [INDUSTRIAL] ..... **R-LUG** ..... 4, 5, 36, 41, 56, 59

**RLS** ..... **R-LUG S** ..... 18, 20, 36, 42

**STMS** [INDUSTRIAL] ..... **SMOOTH TREAD-MS** ..... 4, 9, 36, 47, 56, 66

**VCH** [INDUSTRIAL] ..... **V-STEEL CONTAINER HANDLER** ..... 4, 6

**VCHD** [INDUSTRIAL] ..... **V-STEEL CONTAINER HANDLER DEEP** ..... 4, 7

**VCHR** ..... **V-STEEL CONTAINER HANDLER-R** ..... 4, 7

**VCHS** [INDUSTRIAL] ..... **V-STEEL CONTAINER HANDLER S** ..... 4, 8

**VELS** ..... **V-STEEL E-LUG S** ..... 18, 21

**VFT** ..... **V-STEEL F-TRACTION** ..... 18, 19

**VGT** ..... **V-STEEL G-TRACTION** ..... 56, 57

**VHS** ..... **V-STEEL HIGH SPEED SERVICE** ..... 56, 57

**VJT** ..... **V-STEEL J-TRACTION** ..... 30, 33, 36, 41

**VKT** ..... **V-STEEL K-TRACTION** ..... 12, 13, 30, 31, 36, 40, 50, 51, 56, 58

**VL2** ..... **V-LUG 2** ..... 36, 37

**VLT** ..... **V-STEEL L-TRACTION** ..... 12, 14, 36, 37, 50, 51

**VLTS** ..... **V-STEEL L-TRACTION S** ..... 12, 15, 36, 38

**VMT** ..... **V-STEEL M-TRACTION** ..... 12, 13, 18, 19, 36, 42, 50, 52

**VMTP** ..... **V-STEEL M-TRACTION PREMIUM** ..... 18, 22

**VMTS** ..... **V-STEEL M-TRACTION S** ..... 18, 23, 56, 60

**VRDP** ..... **V-STEEL ROCK DEEP PREMIUM** ..... 18, 24



**VREP** ..... **V-STEEL ROCK E-PREMIUM RADIAL** ..... 18, 24

**VREV** ..... **V-STEEL ROCK EXTRA V-OPERATION** ..... 18, 25

**VRF** ..... **V-STEEL ROCK FAST PREMIUM** ..... 18, 20

**VRL** ..... **V-STEEL R-LUG** ..... 50, 52

**VRLS** ..... **V-STEEL R-LUG S** ..... 4, 6, 18, 25, 56, 60

**VRPS** ..... **V-STEEL ROCK PREMIUM SERVICE** ..... 18, 26

**VRQP** ..... **V-STEEL ROCK QUARRY PREMIUM** ..... 18, 27

**VSB** ..... **V-STEEL S-BLOCK** ..... 56, 58

**VSDL** ..... **V-STEEL D-LUG** ..... 36, 45, 56, 64

**VSDL2** ..... **V-STEEL D-LUG 2** ..... 4, 8, 56, 65

**VSDR** ..... **V-STEEL SUPER DEEP ROCK** ..... 36, 46, 56, 65

**VSDT** ..... **V-STEEL SUPER DEEP TRACTION** ..... 36, 46, 56, 66

**VSJ** [INDUSTRIAL] ..... **V-STEEL JAMAL** ..... 56, 61

**VSMS** ..... **V-STEEL SMOOTH TREAD MINE SERVICE** ..... 4, 9, 36, 48, 56, 67

**VSMS2** ..... **V-STEEL SMOOTH TREAD MINE SERVICE 2** ..... 36, 48

**VSNL** ..... **V-STEEL N-LUG** ..... 36, 43, 56, 62

**VSNT** ..... **V-STEEL N-TRACTION** ..... 12, 15, 36, 39, 56, 62

**VSW** ..... **V-STEEL SNOW WEDGE** ..... 30, 31, 36, 39, 56, 59

**VSWAS** ..... **V-STEEL SNOW WEDGE ALL SEASON** ..... 30, 32

**VTS** ..... **V-STEEL TRACTION AND STABILITY** ..... 12, 14, 36, 38

**VUT** ..... **V-STEEL ULTRA TRACTION** ..... 30, 32, 36, 40, 50, 53, 56, 61

**VZTP** ..... **V-STEEL Z-TRACTION PREMIUM** ..... 18, 27

**VZTS** ..... **V-STEEL Z-TRACTION S** ..... 18, 28

**TREAD PATTERN**

SIZE - TRA ..... PAGE

**DL**

<b>17.5-25 - L-5</b> .....	36, 44
<b>26.5-25 - L-5</b> .....	36, 44
<b>29.5-25 - L-5</b> .....	36, 44, 56, 63
<b>35/65-33 - L-5</b> .....	36, 44
<b>45/65-45 - L-5</b> .....	36, 44
<b>50/65-51 - L-5</b> .....	36, 44
<b>65/65-57 - L-5</b> .....	36, 44

**ELS2**

<b>18.00-25 - E-4</b> .....	4, 5
<b>18.00-33 - E-4</b> .....	4, 5

**RL**

<b>12.00-20 - E-3</b> .....	56, 59
<b>14.00-24 - E-3</b> .....	4, 5
<b>17.5-25 - L-3</b> .....	36, 41
<b>20.5-25 - L-3</b> .....	36, 41
<b>21.00-25 - L-3</b> .....	4, 5
<b>23.5-25 - L-3</b> .....	36, 41

**RLS**

<b>26.5-25 - L-4</b> .....	36, 42
<b>29.5-25 - L-4</b> .....	36, 42
<b>27.00-49 - E-4</b> .....	18, 20

**STMS**

<b>12.00-24 - L-5S</b> .....	36, 47, 56, 66
<b>14.00-24 - L-5S</b> .....	4, 9, 56, 66
<b>17.5-25 - L-5S</b> .....	36, 47, 56, 66
<b>18.00-25 - L-5S</b> .....	4, 9
<b>26.5-25 - L-5S</b> .....	36, 47, 56, 66
<b>29.5-29 - L-5S</b> .....	36, 47, 56, 66
<b>35/65-33 - L-5S</b> .....	36, 47, 56, 66
<b>45/65-45 - L-5S</b> .....	36, 47

**VCH**

<b>14.00R24 - L-3</b> .....	4, 6
-----------------------------	------

**VCHD**

<b>16.00R25 - L-4</b> .....	4, 7
-----------------------------	------

**VCHR**

<b>16.00R25 - L-4</b> .....	4, 7
-----------------------------	------

**VCHS**

<b>12.00R20 - L-4</b> .....	4, 8
<b>14.00R24 - L-4</b> .....	4, 8
<b>18.00R25 - L-4</b> .....	4, 8
<b>18.00R33 - L-4</b> .....	4, 8

**VELS**

<b>18.00R25 - E-4</b> .....	18, 21
<b>18.00R33 - E-4</b> .....	18, 21
<b>21.00R35 - E-4</b> .....	18, 21
<b>37.00R57 - E-4</b> .....	18, 21

**VFT**

<b>27.00R49 - E-3</b> .....	18, 19
-----------------------------	--------

**VGTT**

<b>24R21 - E-2</b> .....	56, 57
<b>445/80R25 - E-2</b> .....	56, 57

**VHS**

<b>385/95R24 - E-2</b> .....	56, 57
<b>385/95R25 - E-2</b> .....	56, 57
<b>445/95R25 - E-2</b> .....	56, 57
<b>525/80R25 - E-2</b> .....	56, 57
<b>36.00R51 - E-2</b> .....	56, 57

## VJT

17.5R25 - L-3	36, 41
20.5R25 - L-3	30, 33, 36, 41
23.5R25 - L-3	36, 41
26.5R25 - L-3	36, 41
29.5R25 - L-3	36, 41
29.5R25 - L-4	36, 41

## VKT

14.00R24 - E-2	56, 58
14.00R24 - G-2	30, 31
16.00R24 - G-2	30, 31
17.5R25 - E-2	50, 51
17.5R25 - E2/G2	30, 31
17.5R25 - L-2	36, 40
20.5R25 - L-2	36, 40
23.5R25 - E-2	12, 13, 50, 51
23.5R25 - L-2	36, 40
26.5R25 - E-2	12, 13
26.5R25 - L-2	36, 40
29.5R29 - E-2	50, 51
37.5R39 - E-2	50, 51

## VL2

17.5-25 - E3/L3	36, 37
20.5-25 - E3/L3	36, 37
23.5-25 - E3/L3	36, 37
26.5-25 - E3/L3	36, 37

## VLT

23.5R25 - E3/L3	12, 14, 36, 37
26.5R25 - E3/L3	12, 14, 36, 37
29.5R25 - E3/L3	12, 14, 36, 37
750/65R25 - E3/L3	12, 14, 36, 37
33.25R29 - E-3	50, 51
33.25R35 - E-3	50, 51
37.25R35 - E-3	50, 51
40.5/75R39 - E-3	50, 51

## VLTS

20.5R25 - E-4	12, 15
23.5R25 - E-4	12, 15, 36, 38
26.5R25 - E-4	12, 15
29.5R25 - E-4	12, 15
750/65R25 - E-4	12, 15
875/65R29 - E4/L4	12, 15, 36, 38

## VMT

17.5R25 - L-3	36, 42
20.5R25 - E-3	12, 13, 50, 52
20.5R25 - L-3	36, 42
23.5R25 - E-3	12, 13, 50, 52
23.5R25 - L-3	36, 42
26.5R25 - E-3	12, 13
26.5R25 - L-3	36, 42
29.5R25 - E-3	12, 13
29.5R25 - L-3	36, 42
30.00R51 - E-3	18, 19
33.00R51 - E-3	18, 19
40.00R57 - E-3	18, 19

## VMTP

18.00R33 - E-4	18, 22
21.00R33 - E-4	18, 22
21.00R35 - E-4	18, 22
24.00R35 - E-4	18, 22
27.00R49 - E-4	18, 22
33.00R51 - E-4	18, 22

## VMTS

14.00R25 - E-4	56, 60
16.00R25 - E-4	56, 60
18.00R25 - E-4	18, 23

## VRDP

40.00R57 - E-4	18, 24
42/90R57 - E-4	18, 24
46/90R57 - E-4	18, 24
59/80R63 - E-4	18, 24

## VREP

27.00R49 - E-4	18, 24
----------------	--------

## VREV

46/90R57 - E-4	18, 25
----------------	--------

## VRF

53/80R63 - E-3	18, 20
59/80R63 - E-3	18, 20

## VRL

40.5/75R39 - E-3	50, 52
------------------	--------

## VRLS

14.00R25 - E-4	56, 60
16.00R25 - E-4	4, 6
24.00R35 - E-4	18, 25
30.00R51 - E-4	18, 25
36.00R51 - E-4	18, 25

## VRPS

33.00R51 - E-4	18, 26
46/90R57 - E-4	18, 26
50/90R57 - E-4	18, 26
53/80R63 - E-4	18, 26
59/80R63 - E-4	18, 26

## VRQP

18.00R33 - E-4	18, 27
24.00R35 - E-4	18, 27

## VSB

14.00R24 - E-2	56, 58
14.00R25 - E-2	56, 58

## VSDL

8.25R15 - L-5	36, 45, 56, 64
14.5R15 - L-5	36, 45, 56, 64
15.5R25 - L-5	36, 45
17.5R25 - L-5	36, 45
20.5R25 - L-5	36, 45
23.5R25 - L-5	36, 45, 56, 64
26.5R25 - L-5	36, 45
29.5R25 - L-5	36, 45, 56, 64
29.5R29 - L-5	36, 45
35/65R33 - L-5	36, 45, 56, 64
45/65R39 - L-5	36, 45
45/65R45 - L-5	36, 45
50/65R51 - L-5	36, 45
55.5/80R57 - L-5	36, 45
60/80R57 - L-5	36, 45

## VSDL2

10.00R15 - L-5	56, 65
12.00R20 - L-5	4, 8, 56, 65

## VSDR

20.5R25 - L-5	36, 46, 56, 65
---------------	----------------

## VSDT

23.5R25 - L-5	36, 46
26.5R25 - L-5	36, 46
29.5R25 - L-5	36, 46, 56, 66
29.5R29 - L-5	36, 46
35/65R33 - L-5	36, 46

## VSJ

21.00R25 - E-7	56, 61
----------------	--------

## VSMS

9.00R20 - L-5S	36, 48, 56, 66
12.00R20 - L-5S	4, 9, 56, 66
12.00R24 - L-5S	4, 9, 56, 66
14.00R24 - L-5S	36, 48, 56, 66
17.5R25 - L-5S	36, 48
18.00R25 - L-5S	36, 48
26.5R25 - L-5S	36, 48, 56, 66
29.5R29 - L-5S	36, 48, 56, 66

## VSMS2

26.5R25 - L-5S	36, 48
29.5R29 - L-5S	36, 48

## VSNL

14.00R20 - L-4	56, 62
35/65R33 - L-4	36, 43
45/65R45 - L-4	36, 43

## VSNT

26.5R25 - E4/L4	12, 15, 36, 39
29.5R25 - E4/L4	12, 15, 36, 39
29.5R29 - L-4	36, 39
35/65R33 - L-4	36, 39, 56, 62

## VSW

14.00R24 - G-2	30, 31, 56, 59
16.00R24 - G-2	30, 31
17.5R25 - G-2	30, 31, 36, 39
385/95R25 - E-2	56, 59
600/65R25 - L-2	36, 39
20.5R25 - L-2	36, 39, 56, 59
23.5R25 - G-2	36, 39

## VSWAS

17.5R25 - G-2	30, 32
---------------	--------

## VTS

550/65R25 - L-3	36, 38
650/65R25 - L-3	36, 38
750/65R25 - L-3	36, 38
775/65R29 - L-3	36, 38
875/65R29 - E3/L3	12, 14, 36, 38

## VUT

13.00R24 - G-2	30, 32
14.00R24 - G-2	30, 32
15.5R25 - G-2	30, 32
15.5R25 - L-2	36, 40, 56, 61
17.5R25 - G-2	30, 32, 36, 40, 56, 61
20.5R25 - L-2	36, 40
20.5R25 - L-2	30, 32, 50, 53
23.5R25 - L-2	30, 32
23.5R25 - L-2	36, 40, 50, 53

## VZTP

46/90R57 - E-4	18, 27
----------------	--------

## VZTS

37.00R57 - E-4	18, 28
40.00R57 - E-4	18, 28

## Bridgestone Americas Tire Operations, LLC

Off Road Tire Limited Warranty - EFFECTIVE: JANUARY 1, 2012

### LIMITED WARRANTY

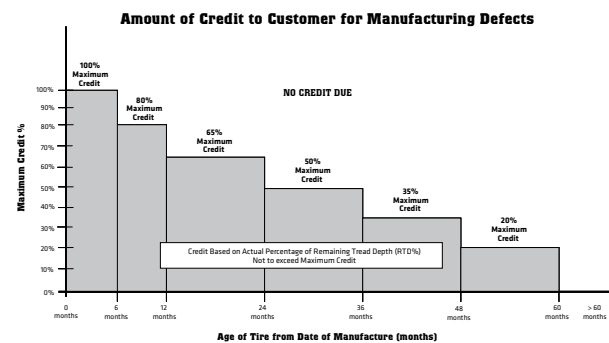
The following warranty contains certain rights and obligations that pertain to Bridgestone and Firestone branded off-the-road (OTR) tires. Please review these rights and obligations carefully.

### DEFINITION

This Limited Warranty covers all Bridgestone and Firestone branded OTR tires as designated in Bridgestone and Firestone OTR product listings (price books and catalogs). It does not include, among others, agricultural tires, aircraft, light construction tires, or tires marked "NA" (not adjustable).

### ELIGIBILITY

Every OTR tire bearing the name Bridgestone or Firestone and with a complete serial number molded in the sidewall is warranted to be free from manufacturing defects within the manufacturer's control. If an examination by an authorized Bridgestone or Firestone OTR representative shows that any such tire failed as a result of manufacturing defects, it will, at the option of Bridgestone Americas Tire Operations (BATO), either be repaired at no charge, or a credit will be issued toward the purchase price of a replacement tire, being a comparable Bridgestone or Firestone OTR product. This credit will be determined by applying the lesser of the percentage of remaining tread depth (RTD%) and the maximum age based credit shown in the following chart.



The replacement percentage will be multiplied by the original purchase price of the tire (excluding federal excise tax) to determine the amount of credit to be applied. Such credit must be applied toward the purchase price of the replacement tire in effect at the time of adjustment.

All adjusted tires will be disabled and the serial numbers will be removed. Customer is responsible for the disposal of all adjusted tires.

This warranty coverage is for OTR tires used within published designed specifications for Bridgestone and Firestone tires. Any use outside such specifications automatically voids this warranty. Please consult Bridgestone or Firestone data books, maintenance manuals, etc. for design specifications. This warranty does not apply to used or "NA" (not adjustable) tires.

### TIME PERIOD

This warranty applies to Bridgestone and Firestone brand OTR tires for a maximum period of five years (60 months) from date of manufacture. The date of manufacture can be determined by the second and third digits in the serial number code. For non-serial controlled tires, the date of manufacture can be determined from the production lot code.

### LIMITATIONS

This Limited Warranty is applicable to the original purchaser and is not assignable to subsequent purchasers.

No Bridgestone or Firestone dealer, agent, or representative has the authority to make or imply any representation, promise or agreement which in any way varies or extends the terms of this warranty.

Any tire, no matter how well manufactured, may fail in service or become unserviceable due to conditions beyond the control of the manufacturer. This Limited Warranty is under no circumstances a representation that a tire failure cannot occur.

This limited warranty gives you specific rights and you may also have other rights which may vary from jurisdiction to jurisdiction. To the extent that the provisions of any applicable legislation expressly replace, eliminate, amend or prohibit any term or terms contained herein, such term or terms shall be accordingly replaced, eliminated, amended or extended, as the case may be, in accordance with such legislation.

### LIMITED WARRANTY EXCLUSIONS - ALL OTR TIRES AND TUBES

All OTR tire and tube warranties are subject to the following exclusions:

1. Tires purchased more than 60 months from the date of manufacture.
2. Tires for which alternative warranties or guarantees have been negotiated.
3. Tire used under chains. BATO does recognize that in many applications tire chains provide enhanced tire protection and may extend tire life. In these cases, BATO may extend special negotiated warranties. Please consult your BATO Off Road Tire Division representative for details.
4. Damage resulting from misuse, improper mounting, misapplication, use of non-approved rims, improper inflation, overloading, running flat, misalignment or imbalance of wheels/rims, defective brakes or shock absorbers, abuse, willful damage, oil, chemical action, fire or other externally-generated heat, use of studs, water or other material entrapped inside the tire, vehicle damage or road hazards (such as rock cuts, punctures, cut separations, impacts, flex breaks).
5. Claims for irregular wear or rapid tread wearout are not covered by this limited warranty.
6. Any tire which is operated above its ton-mile-per-hour (TMPH) or Tonne-kilometer-per hour (TKPH) rating.
7. Tires mounted with non-approved tubes or o-rings.
8. Used, Repaired, or Retread tires.
9. Any modifications to the tire (added butress shoulders, regrooving, relugging, etc.) void all warranties.
10. Any material added to the tire (tire fill, sealer, balancer, etc.) is not covered by this limited warranty and will not be compensated for in case of credit being issued for the tire.
11. Use of a solid type fill (such as urethane) voids all warranties.
12. Any costs associated with the repair of tires are not covered unless previously approved by BATO.
13. Costs of mounting and balancing following pro-rated replacement or repair of tires or tubes, and applicable federal, state, provincial, and local taxes, are not covered under this warranty.
14. Cost of disposal of warranted tires. Disposal of tires is the sole responsibility of the customer.
15. ALL OTHER WARRANTIES, INCLUDING THE IMPLIED WARRANTIES OF MERCHANTABILITY AND FITNESS FOR A PARTICULAR PURPOSE, ARE EXPRESSLY DISCLAIMED TO THE EXTENT PERMITTED BY LAW.
16. Some jurisdictions do not allow limitations in how long an implied warranty lasts, or the exclusion or limitation of incidental or consequential damages, so the above limitations or exclusions may not apply to you.
17. ALL OBLIGATIONS OR LIABILITIES FOR INDIRECT, INCIDENTAL, PUNITIVE OR CONSEQUENTIAL DAMAGE ARE HEREBY EXCLUDED TO THE EXTENT PERMITTED BY LAW, INCLUDING ECONOMIC LOSS, LOSS OF PROFIT, LOSS OF USE OF VEHICLE, LOSS OF TIME, PERSONAL INJURY OR DEATH.

### TO OBTAIN WARRANTY SERVICE

1. Contact an authorized Bridgestone or Firestone OTR dealer or representative. Please be prepared to provide proof of purchase of the product and purchase date.
2. The authorized dealer or representative will contact Bridgestone Americas to arrange the inspection of the tire in question and processing of your claim. The dealer has no authority or responsibility to make the determination as to eligibility for coverage under this warranty.





**BRIDGESTONE**

**535 Marriott Drive, 8th Floor  
Nashville, TN 37214**

**CUSTOMER SERVICE  
800-572-8905**

**[OTRCUSTOMERSERVICE@BFUSA.COM](mailto:OTRCUSTOMERSERVICE@BFUSA.COM)**

**PRINTED ON  
RECYCLED PAPER**

